



Duke University Medical Center Library News

October 1998

Issue #260

FROM THE DIRECTOR

Celebrating National Medical Librarians Month!

Please join the Duke University Medical Center Library in celebrating the Medical Library Association's (MLA) Second Annual National Medical Librarians Month in October. This celebration honors medical librarians, who routinely make an impact on quality health care, education, and innovative research.

During October, the Medical Center Library will be recognizing our outstanding professional librarians who support the health information needs of the Medical Center. The roles of medical librarians are changing and expanding beyond traditional collection development and reference service providers, into teachers, consultants, and innovators in information management. They serve as Internet navigators, create gateways to electronic resources, and provide advice on how to locate, retrieve, and use health information. They teach new skills in selecting and evaluating information resources, including the use of evidence-based medicine techniques. Our medical librarians provide you with access to information, when, where and how you need it.

During the celebration, the Library will be holding demonstrations and other special events featuring some of our new resources, including the Web of Science (citation indexes online) and our expanding full text journal collection. Please refer to the schedule of events below for dates, times, and other details.

I hope that you will join our celebration and help recognize all the achievements and accomplishments of our medical librarians -- your health information connection.

Susan Feinglos

October 1	<i>Kick-off for National Medical Librarians Month</i>
October 8 - 9	<i>Demos: Harrison's Online & Scientific American Medicine (SAM) Online</i> 11:00 am - 2:00 pm REGISTER FOR PRIZES
October 15	<i>Web of Science (WOS) Workshops</i> 1:30 pm - 3:00 pm; 4:00 pm - 5:30 pm
October 16	<i>Web of Science (WOS) Workshops</i> 11:00 am - 12:30 pm; 4:30 pm - 6:00 pm
October 19	<i>Demo: Journals@Ovid (Full text journals)</i> 11:00 am - 2:00 pm REGISTER FOR PRIZES
October 26 - 30	<i>Register for free Ovid MEDLINE searches from your favorite librarians</i> Drawing on October 30th



Duke University Medical Center Library

Monday - Friday 8:00 am - 12:00 am
Saturday 10:00 am - 6:00 pm
Sunday 12:00 noon - 12:00 am

Administration 660-1150
Circulation 660-1100
Information Desk 660-1111
ILL/Document Delivery 660-1135

From the Director.....	1	Gifts and Donations.....	4
National Medical Librarians Month.....	1	Online Journal Check-In.....	5
Secret Passages to the Library.....	2	Changing Roles in the Library.....	5
More Clinical Tools Available.....	3	The Library Salutes.....	6
Database Highlight	4	Library Educational Offerings.....	7

Secret Passages to the Library

After working a few days at the Medical Center Library Circulation Desk, a person could be forgiven for believing that finding the door to the Searle Center is comparable in difficulty to the discovery of the entrance to King Tut's tomb.

The confusion begins at the upper level entrance to the Seeley G. Mudd Building which is reached via the walkway between Duke North and South Hospitals. When you enter the outside door, you step into a vestibule with two doors. The door straight ahead leads to the elevator that goes only to the Searle Center and the Faculty Commons Restaurant. Immediately to the right is the door that leads to the Medical Center Library and the offices of Continuing Medical Education, Grants and Contracts, and the Medical Center News Service.

For brand new Duke University Medical Center (DUMC) employees trying to get to an 8 a.m. orientation session in the Searle Center, their first encounter with the three-door upper level entrance represents an inland version of the Bermuda Triangle. It's like entering a twilight zone of doors, with directional signs to several different destinations throughout the Mudd Building.

The Mudd Building has a total of five floors, but they are not designated as floors One through Five. The Searle Center and Commons Restaurant are on the first or ground floor (sometimes referred to as the lower level by those outside the Mudd Building) and can be accessed through the ground level entrances, as well as the walkway entrance.

The Medical Center Library occupies floors two through five and is accessed directly from the walkway entrance door. When you enter on the Entrance Level (actually the third floor of the building), you can go downstairs to the Lower Level (really the second floor) to get to the History of Medicine Collections, MLEC, Administration offices, and the other Medical Center offices located there. From the Entrance Level, you can go to the Entrance Level Rear (a mezzanine) to reach the Reference and Current Journals sections. Stairs and an elevator in the Library's Entrance Level lobby will take you to the First and Second Stacks (actually the fourth and fifth floors) where the books and bound journal collections are housed.

The elevator within the Library is separated from the Searle Center elevator by a glass partition and a locked door. Hardly a day goes by without a Circulation Desk staff member having to intercede when frustrated people try to reach the Searle Center using the Library-side elevator, because the Lower Level button only takes them down one floor in the Library, not down to the ground level. After vainly trying to get to the other elevator through the locked door and glass wall, many try to get to the Searle Center by exiting through the Library entrance door. They then have to be told to use the exit door to go back outside, and then come into the building again and go straight ahead to reach the Searle Center elevator.

The floor name designations were assigned based on the assumption that people would see and read the signs on the doors and elevator button panels. But all too frequently, people entering the building do not see the labels on the doors and wind up in the wrong place.

So, as newcomers race the clock to get to the Searle Center for orientation . . . a word of advice . . . before you push ahead through that door . . . stop and read the words in front of you . . . or you may enter the twilight zone of the Mudd Building.

Maurice Reece
Circulation Services

The Medical Center Library has just added two new online Internal Medicine resources to the Library's Website. To access these tools from your browser, select "Clinical Tools" from our main Library page (<http://www.mc.duke.edu/mclibrary>). In order to use these tools, you must be connected to a computer with a Duke IP (Internet Protocol) address. Each resource allows up to 10 simultaneous users. If you have trouble accessing these resources, please contact the Information Desk at 660-1111 or send email to mclref@mc.duke.edu. Also, check the cover page of this issue for information on Library demonstrations of these resources during National Medical Librarians Month.



Harrison's Online

Julie Garrison
Head, Electronic Resource Services

Database Highlight: LEXIS-NEXIS

LEXIS-NEXIS Academic Universe is a Web-based multidisciplinary database providing access to a wide range of legal, news, business, and medical and health information sources. Though it is particularly strong in legislative, government, financial, and company information, the "General Medical & Health Topics" section includes the full text of selected medical journals and newsletters on a variety of subjects. To access LEXIS-NEXIS, connect to <http://web.lexis-nexis.com/universe>. You do not need a password to use the database, but you will need to be connected to a computer with a Duke IP address.

To begin searching, choose a "**Search Form**" from the Academic Universe homepage. Each Search Form is a broad topic, such as *General News*, *Company News* or *Company Financial Information*, *Government & Political News*, *Biographical Information*, *Reference & Directories*, ***General Medical & Health Topics***, or ***Medical Abstracts***. After selecting a particular Search Form, choose the most appropriate **Source Material** for your topic from the pull-down menu on the Search Form. For example, the types of source materials available for "General Medical & Health Topics" are *Medical and Health News*, *Medical and Health Journals*, *FDC Newsletters*, and *JCAHO Publications*. (Click on the "**Sources**" button at the top of the search screen to see what publications are available within each Source Material.) You may want to try your search in several different Source Materials.

TOPIC is a *required* field on the Search Form. Enter the words or phrases that describe your area of interest. You may use Boolean operators such as "Or" or "And" in constructing your search statement. Adjacent words (without Boolean operators) are searched as phrases rather than as individual words, so you do not need to enclose them in quotation marks. The **Additional Terms** field is an extension of the Topic field, and has the effect of narrowing your search request. Terms entered here can appear anywhere within a document in combination with the required topic chosen. Sample Search:

Search Form - General Medical & Health Topics

Topic: glucose or blood sugar

Additional Terms: painless and monitor!

Source Material: *Medical and Health News*

Date: previous year

Full text documents on painless blood sugar monitoring will be retrieved from publications such as *PR Newswire*, *Business Wire*, and *Diabetes Forecast*.

There is a 1000 document retrieval limit in Academic Universe. To retrieve a smaller set, consider limiting your search by date or additional search terms, or specify a particular publication from the Source Material in the Additional Terms field.

For questions about LEXIS-NEXIS Academic Universe, please contact Information and Education Services at 660-1111 or send email to mciref@mc.duke.edu.

Betsy Adams

Information and Education Services

Gifts and Donations

The Medical Center Library receives numerous gifts and donations from faculty, staff, and students. We greatly appreciate these gifts and would like to acknowledge the following individuals who donated books/materials to the Medical Center Library from July, 1997 - June, 1998.

Dr. W. Banks Anderson, Jr.	Mr. Frederick C. Hine
Dr. Jay A. Baker	Dr. Margaret Humphreys
Dr. Dan G. Blazer	Mrs. Eleanor Kinney
Ms. Pilar Bautista	Mr. Eric N. Lieberman
Dr. J. Joseph Blum	Mr. Marc E. Lieberman
Ms. Martha Burke	Dr. Michael R. McVaugh
Ms. Barbara Busse	Mrs. Susan Walker Miller
Dr. Ewald W. Busse	Dr. Samuel Moon
Mr. Isaac Clark, Jr.	Dr. Elvia G. Moreta
Dr. Raymund S. Cuevo	Dr. Christian R. H. Raetz
Dr. William D. Currie	Dr. Jeremy Rich
Dr. Irwin Fridovich	Dr. Stanley J. Robboy
Dr. Jane T. Gaede	Ms. Kitty Gurkin Rosati
Dr. A. Matthew Gottlieb	Dr. Ralph Snyderman
Mrs. Irene Hackel	Dr. Delford L. Stickel
Dr. Gordon G. Hammes	Dr. Ara Y. Tourian
Dr. George T. Harrell	Dr. Henry S. Wentz
Dr. Clyde A. Helms	Dr. Catherine Wilfert
Ms. Judy Woodburn	

We welcome and encourage your donations. Please contact Mary Ann Brown, Collection Development Librarian (660-1122; brown050@mc.duke.edu).

MLEC Reservation Form Is Back!

Scheduling the Library's Electronic Classroom is made easy by filling out the MLEC Reservation Form available from our Website at <http://www.mc.duke.edu/mclibrary>. From our main Library page, click on the box labeled "Online Forms: Make Us Work," select "Reserve the Classroom," then click "Go." Provide us with your name, the date(s) you'd like to use the classroom, the purpose, and a phone number or email address so we can contact you. We will confirm your reservation within 24 hours. Please contact Julie Garrison (660-1157; garri008@mc.duke.edu) if you have any questions.

The Medical Center Library staff welcomes your suggestions and comments. Please feel free to drop them in the Suggestion Box located on the Entrance Level across from the Circulation Desk.



Online Journal Check-In

The Library uses an online system for journal check-in called **Innovacq**, which shows the latest issue received for each of our journal subscriptions, as well as for journals received in other libraries on campus. Only currently received journals are in the database, so please consult the online catalog or one of the printouts of journal holdings for complete information and holdings of bound volumes.

For access in the Library, choose "Innovacq" from the menu on one of the terminals adjacent to the current journal display. (You may also access Innovacq from any terminal which offers access to the *Duke Library Services* menu). Select **T>Title** from the main menu and enter the complete title. The first screen of information shows the latest issue received and where it is shelved. Additional screens show other recent receipts and indicate when the next issue is expected.

From our main Web page (<http://www.mc.duke.edu/mclibrary>), select "**Book/Journal Check In**" from the *Databases & Resources* drop-down box under *Resources and Publications*. You can also telnet directly to iii.lib.duke.edu. If you are using the access instructions for dialing into Ovid MEDLINE, you can simply substitute "*telnet iii.lib.duke.edu*" for telnet dumclib. Enter **med** at the login prompt and then follow the in-house use instructions above.

Changing Roles in the Library

In our continued efforts to provide the best information services and resources to our customers, the Library has identified the need to redefine some department functions and job responsibilities. The following changes are being implemented.

Scott Garrison, former Systems Librarian, is taking on a new role in the Library as Head of Systems Interface Services. Scott will be working with Library departments on the use of existing Library systems, using new features or expanding functions of these systems, and developing and maintaining staff and patron interfaces for these and future systems. Systems Interface Services will continue to maintain the DUMC Website, with Scott serving as a consultant to DUMC departments. Since Scott will be focusing more of his time on Library-related issues, referrals will be made to other Web resources for technical work.

Learning Resources Services has been renamed **Electronic Resource Services** to reflect the increasing computer and technology roles of the department and their involvement with the selection of electronic resources. Leading the department through this change will be **Julie Garrison**, former Head of Learning Resources Services, now Head of Electronic Resource Services. The department will continue to be responsible for selecting audiovisual teaching materials and computer-assisted instruction programs. In addition to her duties as department head, Julie has also been named Head of Strategic Initiatives and will coordinate major Library projects and initiatives which extend beyond her department.

Visit

the

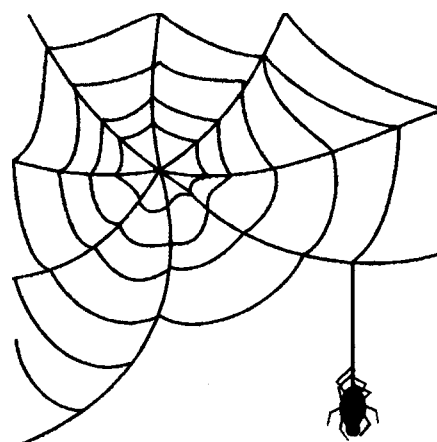
Medical

Center

Library

on the

Internet at:



<http://www.mc.duke.edu/mclibrary>

The Library Salutes....

October is **National Medical Librarians Month**, and as part of our celebration, we salute two of our librarians who have received recent honors, **Beverly Murphy** and **Connie Schardt**.

Beverly Murphy, Head of Marketing & Publications, has been chosen as one of the medical librarians being highlighted by the National Library of Medicine during its observance of National Medical Librarians Month. The NLM honorees can be viewed at <http://www.nlm.nih.gov>.

In addition to the NLM honor, Beverly has also just been chosen to receive the "Marguerite Abel Service Recognition Award" by MAC/MLA, the Mid-Atlantic Chapter of the Medical Library Association. This award is given to a MAC member for exemplary service to the Chapter during the past year. Beverly has contributed to MAC and MLA in many ways. To celebrate the Centennial year of the Medical Library Association, she has been extremely active on the MAC Centennial Task Force during this past year, designing the Task Force's Web page and poster presentation, and editing the history of the Chapter and centennial articles in *MAC Messages*. She has been the editor of *MAC Messages*, the Chapter's newsletter, from 1995 to 1998, and is the MAC Treasurer for 1997-1999.

As well as serving on several MAC committees, Beverly has served on a national level as member of the MLA Publications Committee and as MLANet Task Force Liaison. She has been a mentor for the Academy of Health Information Professionals since 1995, and has also served the Academy in the capacity of AHIP counselor for MAC. As President-Elect and President of ANCHASL, the Association of North Carolina Health and Science Libraries, and as a member of its Continuing Education Committee, she has been extremely effective in expanding that organization's programs and CE opportunities.

Beverly, who has both her undergraduate degree in Biology and her MLS degree from North Carolina Central University, joined the staff of the Medical Center Library in 1983 and has held positions as Reference Librarian, Education Coordinator, and Head of Reference Services before assuming her current position as Head of Marketing and Publications. In addition to her extensive teaching in the Medical Center, she has also taught at North Carolina Central University School of Library & Information Sciences, and has been responsible for presentations and workshops at meetings of local library organizations and at MAC, MLA and ALA.

Connie Schardt was honored by MAC as its 1997 "MAC Librarian of the Year." This award is presented to a MAC member for outstanding contributions in health sciences librarianship. Criteria used to choose the recipient of the honor include leadership in the profession, scholarship, publications, research, teaching, training, mentoring, service to the health professions, and development of special projects.

Connie has been active in MLA, MAC, and the Hospital Library Section of MLA. She has served as the Chair of MAC, and also as Chapter Chair of the Pacific Northwest Chapter of MLA. She chaired the MLA Health Science Libraries Standards Committee, which produced the 1994 *Standards for Hospital Libraries*, and in 1996, participated in the satellite program sponsored by MLA on "The Role of the Library in Accreditation." She has spoken throughout the country on JCAHO and information management issues. She is co-author of a chapter on "Library Standards" in *Current Practices in Health Sciences Librarianship*, and one of the compilers of the MLA publication, *Accreditation and the Hospital Library: Information Management Plans and Assessment Tools*. Last spring, she co-presented a workshop, "Evidence-Based Medicine in Real Time: Practicing EBM in the Ambulatory Setting," at the Annual Meeting of the Society of General Internal Medicine.

Connie received her undergraduate degree from the University of California at Berkeley. After receiving her MLS from San Jose State University, she joined the Idaho State Library where she served for eleven years as Coordinator of the Idaho Health Libraries Network. In this capacity, she was instrumental in hospital library development and in the delivery of medical information to clinicians in remote communities.

In 1990, she accepted a position with the North Carolina Northwest AHEC. She served as Library Director at Rowan Regional Medical Center, and later as the Network Coordinator for Information Services for the Northwest AHEC.

In February of 1997, Connie joined the staff of the Medical Center Library as Education Coordinator in the Information and Education Services Department. In this position, she is currently involved in several projects that support evidence-based medicine for residents. One of these projects involves attending Morning Report for General Medicine Residents to provide information on advanced techniques for searching MEDLINE.

Janie Trumbull, Head, Cataloging



Library Educational Offerings



*The following classes will be held in the Medical Library
Education Center (MLEC), Room 104 on the Lower Level of the Library.*

Database Classes

OVID MEDLINE SYSTEM *(Registration not required)*

Ovid Part I: Basics Using Telnet

Participants are not expected to have used Ovid

11:00 am - 12:30 pm

Tuesday, October 6

Ovid Part I: Basics Using Web Gateway

*Participants are not expected to have used Ovid but
should be familiar with the Internet and Netscape*

3:00 pm - 4:30 pm

Wednesday, October 14

Ovid Part II: Advanced Strategies

Participants are expected to have experience using Ovid

11:00 am - 12:30 pm

Tuesday, October 13

3:00 pm - 4:30 pm

Wednesday, October 28

GRANT INFORMATION ON THE WEB

~ SPIN Database ~

9:00 am - 10:00 am

Thursday, October 22

INTRODUCTION TO REFERENCE MANAGER

(By Appointment Only)

Call Andy Eisan

660-1128

Internet Classes

Registration is required. Sign-ups will be accepted by
phone at 660-1124, via email sent to Connie Schardt,
Education Coordinator, at schar005@mc.duke.edu, or
via the Web at [http://www.mc.duke.edu/mclibrary/
services/regform.html](http://www.mc.duke.edu/mclibrary/services/regform.html).

Introduction to the World Wide Web Using Netscape

10:00 am - 12:00 pm

Wednesday, October 14

Searching and Evaluating Information on the World Wide Web

10:00 am - 12:30 pm

Tuesday, October 27

Managing Bookmarks

9:00 am - 10:30 am

Thursday, October 8

Other Classes

BASICS OF LIBRARY USE *(Registration not required)*

1:00 pm - 2:30 pm

Tuesday, October 6; November 3; December 1

INTRODUCTION TO SOURCES FOR HEALTH STATISTICS

10:00 am - 11:30 am

Wednesday, October 21

***For the most current class schedule, connect to the Library's Website at
<http://www.mc.duke.edu/mclibrary/services/schedule.html>.***

*Duke University Medical Center Library News is published bimonthly.
Susan Feinglos, Director Beverly Murphy, Editor*

Editorial Board:

Mary Ann Brown

Maurice Reece

Iris Gale

Pat Thibodeau

Julie Garrison

To subscribe to *Medical Center Library News* or to receive notification by email when the Web version is available, please complete the information below and return this sheet to the **Medical Center Library, Box 3702, DUMC**. You may also send email to **mclnews@mc.duke.edu**, or complete the Mailing List Form at **<http://www.mc.duke.edu/mclibrary/about/news/mailform.html>**.

Name _____

Department _____

Box Number _____

Email Address _____

(Must include if email notification is being requested)

Email notification only? Yes _____ No _____

Paper copy only? Yes _____ No _____

Both? Yes _____ No _____

DUKE UNIVERSITY MEDICAL CENTER
BOX 3702 MEDICAL CENTER LIBRARY
DURHAM, NORTH CAROLINA 27710

First Class