



SHIFTING DULLNESS

DAVISON SOCIETY NEWSLETTER
DUKE UNIVERSITY SCHOOL OF MEDICINE

DANIEL STIEDLER
Box #2867

17 OCTOBER 1979

JOCKS

TENNIS TOURNAMENT: REMINDER

THE FALL '79 STUDENT-FACULTY TENNIS TOURNAMENT HAS BEEN RESCHEDULED FOR SUNDAY, NOVEMBER 11TH. PARTICIPANTS IN THE TOURNAMENT MUST REGISTER BY NOVEMBER 1ST. TO REGISTER, SEND NAME AND CLASS (OR DEPARTMENT) TO TENNIS, DUMC 2830. PAIRING OF STUDENTS WITH FACULTY MEMBERS WILL BE MADE SUBSEQUENT TO NOVEMBER 1ST. ANY QUESTIONS SHOULD BE DIRECTED TO DAVID MILBAUER MSIII, 286-9165.

AWARDS, SCHOLARSHIPS

CIBA AWARD: CORRECTION OF 10/10 SHIFTING DULLNESS NOTICE

IN LAST WEEK'S SHIFTING DULLNESS IT WAS ANNOUNCED THAT THE CIBA PHARMACEUTICAL COMPANY HAS MADE AVAILABLE A COMPLETE SET OF NETTER ATLAS VOLUMES AS ITS OUTSTANDING COMMUNITY SERVICE AWARD. THE AWARD IS TO RECOGNIZE A MEDICAL STUDENT WHO HAS ENGAGED IN LAUDABLE EXTRACURRICULAR ACTIVITY WITHIN THE COMMUNITY. THE AWARD IS NOT AVAILABLE TO ALL UPPERCLASSMEN. ONLY THIRD YEAR STUDENTS ARE ELIGIBLE. STUDENTS ARE ASKED TO PLACE THEIR NOMINATIONS IN THE DAVISON SOCIETY BALLOT BOX IN THE MAIL ROOM. A RUN-OFF ELECTION WILL BE HELD WHEN A SIGNIFICANT NUMBER OF NOMINATIONS HAVE BEEN RECEIVED.

I NOMINATE _____ FOR THE RECIPIENT
OF THE CIBA OUTSTANDING COMMUNITY SERVICE AWARD.

LUCE SCHOLARS PROGRAM

THE HENRY LUCE FOUNDATION HAS A PROGRAM UNDER WHICH EACH YEAR FIFTEEN POTENTIAL AMERICAN LEADERS WHO ARE NOT AND DO NOT PLAN TO BECOME ASIAN OR INTERNATIONAL RELATIONS SPECIALISTS WILL SPEND TWELVE MONTHS STUDYING, WORKING, AND TRAVELING IN EAST ASIA. DUKE HAS BEEN INVITED TO NOMINATE THREE CANDIDATES FOR 1980-81.

ELIGIBILITY. FOR THESE HIGHLY COMPETITIVE AWARDS UNDERGRADUATES WHO WILL RECEIVE THE BACHELOR'S DEGREE IN MAY, GRADUATE AND PROFESSIONAL SCHOOL STUDENTS, AND RECENT GRADUATES WHO ARE AMERICAN CITIZENS ARE ALL ELIGIBLE. THE APPLICANTS CAN BE NO MORE THAN 29 YEARS OF AGE ON SEPTEMBER 1, 1980. THE QUALIFICATIONS SOUGHT ARE "HIGH POTENTIAL FOR ACCOMPLISHMENT IN FIELDS UNRELATED TO ASIAN SPECIALTIES." POTENTIALITY FOR LEADERSHIP IN THE UNITED STATES WILL BE THE PRINCIPAL CRITERION FOR SELECTION.

THE SCHOLARSHIP YEAR. SUCCESSFUL CANDIDATES WILL NOT BE ENROLLED IN ANY EDUCATIONAL INSTITUTION AND WILL NOT RECEIVE ACADEMIC CREDIT FOR THEIR WORK. THEY WILL RATHER BE GIVEN "A CONCENTRATED EXPOSURE TO A SPECIFIC ASIAN ENVIRONMENT WITHIN THE CONTEXT OF THEIR PROFESSIONAL INTERESTS AND ABILITIES." INDIVIDUAL PROGRAMS WILL BE WORKED OUT BY THE FOUNDATION WITH THE HELP OF THE ASIAN FOUNDATION AND IN CONSULTATION WITH THE CANDIDATES; THEY WILL CENTER ON A FORM OF INTERNSHIP OR WORK-STUDY ARRANGEMENT.

AMOUNT OF AWARD. THE AMOUNT OF EACH AWARD IS \$9,000 PLUS \$2,000 FOR A WIFE OR HUSBAND ACCOMPANYING THE SCHOLAR. AIR TRANSPORTATION WILL BE PROVIDED.

SELECTION PROCESS. INTERESTED STUDENTS SHOULD MAKE APPLICATION TO THE LUCE SCHOLARS COMMITTEE BY NOVEMBER 5 ON FORMS SECURED IN 105 ALLEN. THE COMMITTEE WILL INTERVIEW CANDIDATES AND NOMINATE TO THE LUCE FOUNDATION; THEN, NOMINEES WILL BE INTERVIEWED ON CAMPUS BY REPRESENTATIVES OF THE FOUNDATION. FINALISTS WILL COME BEFORE A REGIONAL SCREENING PANEL IN THE SPRING. SUCCESSFUL CANDIDATES WILL BE NOTIFIED IN MARCH.

APPLICATIONS. APPLICATION FORMS AND FURTHER INFORMATION ARE AVAILABLE AT 105 ALLEN. ALL MEDICAL STUDENTS ARE REMINDED THAT THE DEADLINE FOR RECEIPT OF THE APPLICATION AND ALL SUPPORTING MATERIALS FOR THE LUCE SCHOLARSHIP IS NOVEMBER 5, 1979.

MAP-RDIF APPOINTMENT

WORD HAS BEEN RECEIVED BY DR. CHRISTAKOS' OFFICE THAT JOHN MORRISON, MSIII, HAS BEEN SELECTED BY MAP-RDIF TO STUDY HEALTHY DELIVERY SYSTEMS IN PAKISTAN FROM DECEMBER '79 TO MARCH '80. CONGRATULATIONS.

1980 NATIONAL STUDENT RESEARCH FORUM

THE 1980 NATIONAL STUDENT RESEARCH FORUM WILL BE HELD ON THE CAMPUS OF THE UNIVERSITY OF TEXAS MEDICAL BRANCH, GALVESTON, APRIL 23, 24, 25, AND 26, 1980. THE FORUM IS OPEN TO MEDICAL STUDENTS, GRADUATE STUDENTS REGISTERED AT MEDICAL SCHOOLS, INTERNS AND RESIDENTS, AND IS DESIGNED TO INCLUDE PAPERS ON RESEARCH IN THE BASIC AND CLINICAL SCIENCES. THE PRESENTATIONS MAY INCLUDE WORK WHICH IS COMPLETED OR IN PROGRESS, PUBLISHED OR UNPUBLISHED. FOR THOSE WHO DESIRE TO ENTER THE EXCELLENCE OF RESEARCH COMPETITION FOR AWARDS, ADDITIONAL RULES GOVERNING THOSE COMPETING FOR AWARDS ARE EXPLAINED UNDER THE HEADING MANUSCRIPTS.

ABSTRACTS. ABSTRACTS MUST BE SUBMITTED BY EACH PARTICIPANT. APPLICATIONS AND ABSTRACTS MUST BE POSTMARKED BY DECEMBER 1, 1979. ABSTRACTS SHOULD STATE THE PROBLEM, MATERIALS AND METHODS, AND GIVE THE AUTHOR'S CONCLUSION BASED ON THE RESULTS HE HAS OBTAINED. ABSTRACTS SHOULD BE WELL-PLANNED AND CAREFULLY WRITTEN SINCE PARTICIPANTS ARE SELECTED SOLELY ON THE BASIS OF THESE ABSTRACTS. IF THE ABSTRACT IS APPROVED, PREREGISTRATION FORMS WILL BE MAILED TO THE PARTICIPANT. ABSTRACTS MUST BE SUBMITTED BY ALL PARTICIPANTS ON THE ABSTRACT REPRODUCTION FORM OBTAINED BY WRITING TO THE ADDRESS GIVEN BELOW.

MANUSCRIPTS. EACH PARTICIPANT WISHING TO COMPETE FOR THE "EXCELLENCE OF RESEARCH" AWARDS (MEAD JOHNSON AWARDS AND/OR CATEGORICAL AWARDS) MUST SUBMIT A MANUSCRIPT. FIVE COPIES IN DOUBLE-SPACED TYPEWRITTEN FORM, ALONG WITH COMPLETED PREREGISTRATION FORMS MUST BE SUBMITTED BY FEBRUARY 15, 1980. TO BE ELIGIBLE FOR PARTICIPATION, APPLICANTS MUST COMPETE IN ONE OF THREE CATEGORIES BASED ON THEIR CLASSIFICATION AT THE TIME OF PARTICIPATION: 1) MEDICAL STUDENTS, 2) GRADUATE STUDENTS ASSOCIATED WITH MEDICAL SCHOOLS, AND 3) INTERNS AND RESIDENTS. RESEARCH IN BOTH CLINICAL AND BASIC SCIENCES WILL BE INCLUDED. ONLY ONE MANUSCRIPT WILL BE CONSIDERED FOR THE AWARDS.

THE MATERIAL PRESENTED FOR COMPETITION MUST NOT HAVE BEEN PUBLISHED, EITHER IN WHOLE OR IN PART, PRIOR TO THE FORUM. PRIOR PUBLICATION OF THE ABSTRACT IS PERMISSIBLE. THE MANUSCRIPT IS LIMITED TO 3,500 WORDS. IT SHOULD INDICATE THE PROBLEM UNDER CONSIDERATION AND ITS SIGNIFICANCE, THE MEANS TAKEN TO ACHIEVE A SOLUTION, AND THE SIGNIFICANCE OF THE RESULTS AND THEIR RELATIONSHIP TO BROADER FIELDS OF KNOWLEDGE. PAPERS WILL BE JUDGED ON KNOWLEDGEABILITY, ORIGINALITY, METHODS, RELEVANCE AND ORGANIZATION. INTERPRETATION OF THE DATA WILL ALSO BE CONSIDERED IN THE FINAL JUDGING.

FOR MORE INFORMATION REGARDING THE ORAL PRESENTATION, THE MEETING FORMAT, REGISTRATION, AND TRAVEL ACCOMODATIONS, STUDENTS ARE ENCOURAGED TO PERUSE THE INFORMATION PACKET AT JEANNE LEE'S DESK IN THE ADMINISTRATION OFFICE. RULES FOR ABSTRACTS AND ABSTRACT REPRODUCTION FORMS MAY BE OBTAINED BY WRITING TO:

1980 NATIONAL STUDENT RESEARCH FORUM
SUITE 120, LIBBIE MOODY THOMPSON BASIC SCIENCES BLDG.
THE UNIVERSITY OF TEXAS MEDICAL BRANCH
GALVESTON, TEXAS 77550

ETC...

FIRST YEAR ELECTION RETURNS

THE RESULTS OF THE ELECTION FOR FIRST YEAR CLASS REPRESENTATIVES AND CURRICULUM POSITIONS ARE IN. THE FOUR FIRST YEAR CLASS REPRESENTATIVES ARE: ESTRADA BERNARD, BILL HAZEL, GARY KAY, AND JULIE LANE. THE CURRICULUM COMMITTEE POSITIONS WILL BE FILLED BY SUE FREDERICK AND BOB HARLAND. CONGRATULATIONS TO THE NEW OFFICE HOLDERS.

HERS CAREER COUNSELING WORKSHOP

THE GRADUATE SCHOOLS OF UNC-CH AND THE WOMEN'S FACULTY NETWORK OF DUKE UNIVERSITY ARE JOINTLY SPONSORING A CAREER WORKSHOP, ORGANIZED BY HERS (HIGHER EDUCATION RESOURCE SERVICES)-NEW ENGLAND, A WELLESLEY-BASED, CARNEGIE-FUNDED PROJECT FOR ACADEMIC WOMEN, ON FRIDAY, 9 NOVEMBER, AND SATURDAY, 10 NOVEMBER 1979. THE PURPOSE OF THE WORKSHOP IS TO HELP PRE-DOCTORAL WOMEN SEEKING ACADEMIC JOB PLACEMENTS AND POST-DOCTORAL WOMEN SEEKING TO IMPROVE THEIR CHANCES FOR PERMANENT ACADEMIC POSTS.

WOMEN GRADUATE STUDENTS WHO EXPECT TO RECEIVE THE DOCTORAL DEGREE IN OR BEFORE MAY, 1981, AND NON-TENURED FACULTY WOMEN ARE CORDIALLY INVITED TO PARTICIPATE.

THE SESSION ON FRIDAY, 9 NOVEMBER, WILL BE HELD AT DUKE UNIVERSITY AND WILL BE FOR WOMEN IN THE HUMANITIES AND SOCIAL SCIENCES (INCLUDING EDUCATION AND DIVINITY). THE SESSION ON SATURDAY, 10 NOVEMBER, WILL BE HELD AT UNC-CH AND WILL BE FOR WOMEN IN THE SCIENCES AND PROFESSIONAL SCHOOLS (INCLUDING LIBRARY SCIENCE, SOCIAL WORK, AND NURSING).

EACH SESSION WILL LAST FROM 8:30 A.M. TIL 5:00 P.M. MORNING COFFEE AND LUNCH WITH FEATURED SPEAKER WILL BE PROVIDED. PRE-REGISTRATION FOR DUKE PARTICIPANTS (WHICHEVER SESSION THEY WILL ATTEND) WILL BE HELD BETWEEN 15 AND 19 OCTOBER IN THE OFFICE OF CONTINUING EDUCATION, 107 BIVINS, EAST CAMPUS, 684-6259. FORMS FOR PRE-REGISTRATION ARE AVAILABLE IN THE ADMINISTRATION OFFICE IN THE GREEN ZONE.

WOMEN'S HEALTH - BROWN BAG LUNCH SERIES

THE SERIES, SPONSORED BY AMWA, IS DESIGNED FOR SHARING INFORMATION ABOUT WOMEN'S BODIES/MINDS AND EXPLORING NEW APPROACHES TO THEIR HEALTH CARE. THIS WEEK'S TOPIC IS "MENSTRUAL CRAMPS: THEIR RELIEF THROUGH HYPNOSIS". BRING A LUNCH TO PERKINS LIBRARY (ROOM 226) AT NOON, FRIDAY, 19 OCTOBER.

BROWN LUNG SCREENING

AS WAS MENTIONED IN THE 9/6 ISSUE OF S.D., THE NORTH CAROLINA OCCUPATIONAL SAFETY AND HEALTH PROJECT (NCOSH) NEEDS HELP COORDINATING AND CONDUCTING A BROWN LUNG (BYSSINOSIS) SCREENING CLINIC TO BE HELD

SCREENING CONT'D

IN HIGH POINT AT THE END OF OCTOBER. ALTHOUGH SOME HEALTH BACKGROUND IS HELPFUL IN THOSE VOLUNTEERING, ONLY AN INTEREST IN IMPROVING THE WORKING ENVIRONMENT FOR NORTH CAROLINA WORKERS IS NECESSARY. CLINIC ACTIVITIES INCLUDE TAKING OCCUPATIONAL AND MEDICAL HISTORIES, PERFORMING PULMONARY FUNCTION TESTS AND TAKING BLOOD PRESSURES, AND COUNSELING WORKERS ON THEIR RIGHTS IN THE WORKPLACE. FOR MORE INFORMATION, CALL LEE AT 489-2565, OR BILL AT 929-9365.

SHIFTING DULLNESS ANNOUNCEMENTS

ANYONE WISHING TO PLACE A NOTICE IN THE SHIFTING DULLNESS IS ASKED TO LEAVE INFORMATION IN THE S.D. BOX NEXT TO JEANNE LEE'S DESK IN THE ADMINISTRATION OFFICE OR WITH DAN STIEDLER @ DUMC 2867, 684-6170 (684-6124 EVES.). THE NEWSLETTER IS DISTRIBUTED EACH WEDNESDAY OR THURSDAY; FRIDAY, 4:00 PM, IS THE DEADLINE FOR RECEIVING NOTICES.

SECOND NOTICE ON YEARBOOK: FACULTY SECTION

AS MENTIONED LAST WEEK, THE 50TH ANNIVERSARY EDITION OF THE AESCULATIAN WILL FEATURE A SECTION OF ESSAYS FROM A GROUP OF FACULTY DESCRIBING THEIR PHILOSOPHY OF MEDICAL EDUCATION AND PRACTICE. IN ORDER THAT WE MAY DETERMINE WHOSE VIEWS YOU WOULD MOST LIKE TO SEE EXPRESSED, PLEASE LIST THE NAMES OF FIVE FACULTY MEMBERS IN THE SPACE BELOW AND DEPOSIT IN THE DAVISON SOCIETY BALLOT BOX.

1. _____ 2. _____
3. _____ 4. _____ 5. _____

PATHOLOGY PUZZLE

THE ANSWER TO LAST WEEK'S PUZZLE IS AS FOLLOWS:
IT WILL TAKE 35 MINUTES FOR A PICKLED-PEPPER PICKER TO PICK AND PACK A PECK OF PICKLED PEPPERS.

SUPPOSE S_I = TIME IT TAKES SON TO PICK PEPPERS
 F_I = TIME IT TAKES FATHER TO PICK PICKLED PEPPERS
 S_A = TIME IT TAKES SON TO PACK PEPPERS
 F_A = TIME IT TAKES FATHER TO PACK PICKLED PEPPERS.

THEN (1) $S_I = \frac{1}{2}F_I$,
(2) $F_I = 1\frac{1}{2}S_A$,

OR (3) $S_I = \frac{3}{4}S_A$.

AND (4) $S_I = 1\frac{1}{2}F_A$,

OR (5) $F_A = \frac{2}{3}S_I$

AND SINCE (6) $S_A + F_I + F_A = 20$,

THEN USING (2) AND (5),

PUZZLE CONT'D

OR

NOW EQUATING (3) AND (8),

THUS

AND

(7) $S_A = \frac{1}{2}S_A + \frac{1}{2}S_I - 20,$

(8) $S_I = -\frac{1}{2}S_A + 30.$

(9) $\frac{3}{4}S_A = -\frac{1}{4}S_A + 30.$

(10) $S_A = 20$ AND $S_I = 15,$

(11) $S_I + S_A = 35$ MINUTES

(ONLY!) TWELVE STUDENTS AND HOSPITAL PERSONNEL SUBMITTED THE CORRECT ANSWER TO THE PUZZLE. CONGRATULATIONS TO DAVE PIWNICA-WORMS, MSII, THE WINNER OF THE DRAWING. DAVE WILL RECEIVE A GIFT CERTIFICATE TO BASKIN-ROBBINS.

THIS WEEK'S PUZZLE:

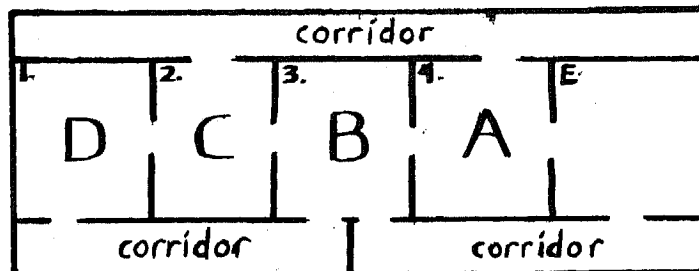
THERE ARE FIVE SINGLE ROOMS ON THE SIXTH FLOOR, B-WING, OF BED TOWER #2 (NEUROLOGY) AT DUKE HOSPITAL NORTH. THE EXAMINATION ROOM AT THE FAR RIGHT IS AT PRESENT FREE, BUT THE OTHER ROOMS ARE OCCUPIED BY PATIENTS NAMED AYKER, BORRELIA, COTARD, AND DERADELPHUS. AT PRESENT THEY ARE ACCOMODATED IN THE ROOMS INDICATED BY THE INITIALS IN THE FIGURE BELOW.

THEY SEEM HAPPY ENOUGH, BUT THE CHIEF RESIDENT ON NEUROLOGY HAS TAKEN IT INTO HIS HEAD THAT DERADELPHUS SHOULD CHANGE PLACES WITH AYKER, AND COTARD WITH BORRELIA. THE CHIEF RESIDENT HAS A VERY ORDERLY MIND, AND ALL OF HIS PATIENTS WOULD THEN BE IN NEAT ALPHABETICAL ORDER, READY TO BE FILED.

SINCE ALL OF THEM ARE PRIVATE PATIENTS WHO HAVE ALL PAID FOR THEIR PRIVACY, IT IS INCONCEIVABLE THAT ANY TWO PATIENTS SHOULD BE IN THE SAME ROOM AT THE SAME TIME. MOREOVER, IT IS UNTHINKABLE THAT A PATIENT SHOULD BE LEFT UNATTENDED IN ONE OF THE DRAUGHTY CORRIDORS WHILE ANOTHER IS BEING MOVED.

WHAT IS THE SMALLEST NUMBER OF MOVES IN WHICH THE POOR, HARASSED, UNAIDED, MEDICAL STUDENT, JACKIE RUTLEDGE MSIV, CAN CARRY OUT THE CHIEF RESIDENT'S ORDERS?

IF YOU CAN GIVE THE NUMBER OF MOVES AND ENUMERATE THEIR ORDER (E.G., C-3, D-EXAMINATION, ETC.) YOU WILL WIN A GIFT CERTIFICATE TO BASKIN-ROBBINS. LEAVE YOUR NAME AND BOX NUMBER WITH YOUR ANSWER IN THE MAIL ROOM BALLOT BOX BY THE EVENING OF SATURDAY, OCTOBER 20.



NUMBER OF MOVES _____

NAME _____

MOVES _____

Box _____ CLASS _____

Letter  Legal