



Duke University Medical Center Library News

February 1999

Issue #262

Farewell To Our Director

After twenty-five years of service to the Medical Center Library, **Susan Feinglos** left her position in January as Library Director to pursue new opportunities at Duke Medical Center as Development Associate in the Comprehensive Cancer Center's Office of Development and Communications. The Library would like to take this opportunity to recognize her many years of dedication and leadership.



In 1973, Susan began her professional career at Duke based in the Library, as the "Aging Librarian" for the Duke Center for the Study of Aging and Human Development and as a member of the Reference Staff. From 1980 - 1991, she was Online Services Coordinator, becoming a nationally-recognized expert in the National Library of Medicine's MEDLINE database. Over the years, she taught and developed numerous online searching courses at the local, regional, and national level. In 1985, Susan wrote one of the definitive books on searching MEDLINE.

After a national search, Susan was named Director in 1992. During her six years as Director, the Library maintained its high-quality services and print collection, while continuing to move into the digital era, employing new technologies to improve access to medical information. A few highlights of the Library's many accomplishments during Susan's directorship are listed below:

- Construction of the Medical Library Education Center (MLEC) which includes a state-of-the-art electronic classroom and multimedia center
- Creation of the Web-based Historical Images in Medicine (HIM) project
- Continued expansion of online database systems
- Installation of the DRA online library catalog
- Continued growth in educational opportunities, most recently evidence-based medicine (EBM)
- Installation of more public workstations
- Integration of full text, online journals into the collection
- Leadership in Medical Center Web developments through the maintenance and design of Websites in the Medical Center and the Library

The Medical Center Library thanks Susan for helping to set the Library's future vision, while ensuring the very best services and resources for the present. Duke University Medical Center faculty, staff, and students have appreciated her many contributions to the Library and Medical Center since 1973. We wish her great success in her new position.

Patricia Thibodeau, Acting Director

Duke University Medical Center Library http://www.mc.duke.edu/mclibrary/ Monday - Friday 8:00 am - 12:00 am Saturday 10:00 am - 6:00 pm Sunday 12:00 noon - 12:00 am Administration 660-1150 Circulation 660-1100 Information Desk 660-1111 ILL/Document Delivery 660-1135	<table style="width: 100%; border: none;"> <tr> <td style="width: 50%;">Farewell to Our Director..... 1</td> <td style="width: 50%;">New Audiovisuals and Multimedia.....4</td> </tr> <tr> <td>Net.work..... 2</td> <td>Black History Month Exhibit.....5</td> </tr> <tr> <td>Duke Proxy Server.....3</td> <td>New Databases Available..... 5</td> </tr> <tr> <td>Staff News.....4</td> <td>Library Educational Offerings.....6</td> </tr> <tr> <td>To Contact Susan Feinglos.....4</td> <td>We Need Your Help!..... 7</td> </tr> </table>	Farewell to Our Director..... 1	New Audiovisuals and Multimedia.....4	Net.work..... 2	Black History Month Exhibit.....5	Duke Proxy Server.....3	New Databases Available..... 5	Staff News.....4	Library Educational Offerings.....6	To Contact Susan Feinglos.....4	We Need Your Help!..... 7
Farewell to Our Director..... 1	New Audiovisuals and Multimedia.....4										
Net.work..... 2	Black History Month Exhibit.....5										
Duke Proxy Server.....3	New Databases Available..... 5										
Staff News.....4	Library Educational Offerings.....6										
To Contact Susan Feinglos.....4	We Need Your Help!..... 7										

Net.work - DUMCL Virtual Tour

If you have ever visited the DUMC Library, you may have noticed that our unique building design and layout can present challenges to finding what you need. In the past, you may have allotted extra time to orient yourself to our building once inside or opted to attend a Library orientation session. Now, not only can you use our Website to learn about our collections, services, and helpful staff, but you can also navigate your way around the Library before you ever set foot in the door.

We originally conceived the idea of a ‘virtual tour’ of the Library a few years ago as we were revising our Website. However, an increasing number of other priorities made it difficult to give this project the attention it required. When Library Intern **Marcus McKoy** joined our staff in June, 1998, he was charged with the task of compiling information from several different sources in order to create the **DUMC Library Virtual Tour** (<http://www.mc.duke.edu/mclibrary/about/vt/>). As he collected the tour’s text and designed and organized it with help from Betsy Adams and Beverly Murphy, he also set to work capturing digital images around the Library using our digital camera.



While Marcus assembled tour content, the Library enlisted the help of graphic artist Chris Huber in the Division of Educational Media Services’ Medical Art Facility to create the reverse-color Library Web icons that the tour features. Scott Garrison created floor plan images based on original design concepts by Maurice Reece.

Once content work and images were completed in August, 1998, we bade a fond farewell to Marcus and then collected feedback from Library staff on the tour. Most people particularly liked the standardized drop-down menu that allows you to jump between stops on the tour from any tour page, and the floor plan links on each page that help you to visually find your tour stop. Connie Schardt, Education Coordinator, made several suggestions which helped us refine some of the tour’s textual content.

One complicated facet to the Library is its photocopiers, since many of them accept different forms of payment. We added value to the floor plan maps by specifying which copiers on which floors of the Library accept coins and bills, Library copy cards, and Duke/FLEX cards.

The staff who contributed to the Virtual Tour project were Marcus McKoy, Library Intern, Betsy Adams, Information and Education Services Librarian, Scott Garrison and Beverly Murphy, co-Webmasters, Maurice Reece, Circulation Services, Chris Huber, Division of Educational Media Services’ Medical Art Facility, and Connie Schardt, Education Coordinator, who helped in refining the tour.

As always, we want to hear from you! Please don’t hesitate to contact us with suggestions on how we can make our Virtual Tour or any other portion of our Website more useful.

Scott Garrison
Head, Systems Interface Services

Getting Connected: Duke Proxy Server



Duke University's Office of Information Technology (OIT) is now offering a proxy server, which makes getting connected to our databases even easier. The proxy server allows you to access databases and other resources available through the Web, from home or other non-Duke locations. This is very helpful to people who use a commercial Internet Service Provider such as AOL or Mindspring, or to those facing long distance charges when connecting to a Duke server.

If you are connecting to the Internet from anywhere other than Duke, you will need to use the proxy server to access restricted resources such as the online textbooks and some of the databases.




What specific steps do I need to take?

First, be sure you know your "acpub" username and password. If you have forgotten either of these or need to get a new account created, the OIT Help Desk can assist you (684-2200).

Next, configure your browser to route requests through the Duke proxy servers.

-  Within your browser (i.e. Netscape) configuration, locate the field for proxy servers.
-  Designate the addresses of the Duke proxy servers.

<u>Servers</u>	<u>Names</u>	<u>Port Numbers</u>
FTP Proxy	ftp-proxy.duke.edu	Port: 8080
Gopher Proxy	gopher-proxy.duke.edu	Port: 8080
HTTP Proxy	http-proxy.duke.edu	Port: 8080

-  Each time you execute an http request (for a Web page), Netscape will automatically route your request through the appropriate proxy server.
-  To authenticate your legitimate Duke status, type your acpub username and password when prompted.
-  Since your re-routed request comes from a "duke.edu" address, access is granted.

OIT has easy-to-follow instructions for obtaining an acpub account, as well as specific configuration directions for various browsers. For more information, see "Frequently Asked Questions About the OIT Proxy Server" at http://www.oit.duke.edu/remote_access/proxyfaq.html.

You may also visit the OIT Help Desk in the North Building or access their Website at <http://www.oit.duke.edu/helpdesk/>.

**NEED A LOGIN TO SEARCH OVID?
FORGOTTEN YOUR OVID PASSWORD?**

Please see the Circulation Staff
or call 660-1100 for assistance.

Staff News

Kathie Ladd, ILL Library Assistant, left in December to accept a position in the Auditing Department at Duke Hospital. She has been replaced by **Claire Myers**, who has been working as ILL Clerk since March, 1998.



Artura Goods, Library Assistant, has recently transferred from Circulation Services to the Information and Education Services Department.

Circulation Services welcomes **Jennifer Glasier** to the staff. She will be working at the Circulation Desk during the day, Tuesday through Saturday. Jennifer previously worked at Will's Book Store in Northgate Mall.



Contact Information for Susan Feinglos



512 South Mangum Street
Durham, N.C. 27701
919-667-2614
feing001@mc.duke.edu

Library Newsletter

Electronic Version

As you may have noticed, current issues of *Medical Center Library News* are available on our Website at <http://www.mc.duke.edu/mclibrary/about/news/index.html>. The electronic version is published around the same time the paper copy gets mailed, so there is no delay in getting the latest Library news. In fact, you can be added to our listserv which notifies you by email when the next issue of the *News* is available on the Web.

If you would like to have less paper delivered to your office, just fill out the **Mailing List Form** on our Website (<http://www.mc.duke.edu/mclibrary/about/news/mailform.html>) or return the form which appears on the back page of this issue.

New Audiovisuals and Multimedia

Highlighted below are a few of the many programs available in the Electronic Resource Services collection.

AUDIOCASSETTES

Audio-Digest provides continuing medical education sound cassettes of medical symposia for health care professionals. The following Audio-Digest subscriptions have just been added:

- **General Surgery** - Starting with volume 45, number 20
- **Ophthalmology** - Starting with volume 36, number 21

CD-ROM

Foundations of Electronic Fetal Monitoring - Provides new perinatal nurses and advanced students with principal concepts and guidelines of electronic assessment for maternal and fetal well-being. This interactive 10-lesson program provides an opportunity for nurses to practice their clinical assessment skills.

VIDEOCASSETTES

The Choice of a Lifetime: Returning from the Brink of Suicide - Six diverse people who turned back from the brink of suicide speak candidly about the roots of their despair, the circumstances that led them to the edge, and their journey back to health.

Video Atlas of Human Anatomy: Volume 4, The Head and Neck, Part 1 - Consists of five sections including support and movement of the head, base of the skull and facial skeleton, the nasal cavity, the larynx, and the oral cavity.

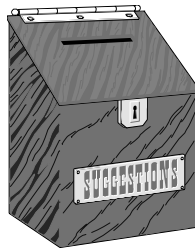
All **audiovisual items** are located in the Reserve Reading Room on the Entrance Level of the Medical Center Library. **Multimedia items**, which are available for in-house use only, are located in the Medical Library Education Center (MLEC), Room 104 of the Library.

Electronic Resource Services staff are constantly working towards improving the audiovisual and multimedia collections and services. For questions and information, please contact Alveria Pugh (660-1160; beeper 970-2783; pugh0001@mc.duke.edu) or Julie Garrison (660-1157; garri008@mc.duke.edu).

Black History Month Exhibit

In celebration of Black History Month, the Medical Center Library will display an exhibit entitled, "Black History Month: A Medical Perspective." In conjunction with the exhibit, the Library will also be hosting two guest speakers from Duke Medical Center. **Dr. Brenda Armstrong**, Associate Dean, Director of Admissions, will speak on February 5th at 1:00 pm and **Dr. Charles Johnson**, Professor Emeritus, Division of Endocrinology, on February 26th at 3:00 pm. The exhibit will be on display on the lower level of the Library during the months of February and March.

The Medical Center Library staff welcomes your suggestions and comments. Please feel free to drop them in the Suggestion Box located on the Entrance Level across from the Circulation Desk.



New Databases Available

SPORTDiscus covers serial and monographic literature in the areas of recreation, exercise physiology, sports medicine, coaching, physical fitness, training, conditioning, and the psychology, history and sociology of sport. Seventy percent of the database consists of periodical articles. This is an excellent resource for physical therapists, sports medicine specialists, orthopedists, human kineticists, and anyone studying general human physiology. SPORTDiscus is an Ovid database and may be accessed via telnet (**dumclib.mc.duke.edu**) or via the Website at <http://www.mc.duke.edu/ovidweb/ovidweb.cgi>. If you already have a login and password to search MEDLINE, you may use the same ones to search SPORTDiscus.

Alt-HealthWatch is a full text database of periodicals, peer-reviewed journals, academic and professional publications, magazines, consumer newsletters and newspapers, research reports, and association newsletters focused on complementary, alternative and integrated approaches to health care and wellness. To access Alt-HealthWatch, connect directly to <http://www.softlineweb.com/althealth> or use the link on our main Web page under the "Resources and Publications" drop-down menu (<http://www.mc.duke.edu/mclibrary/>). Although a password is not needed to search the database, you will need to be connected to a computer with a Duke IP address.

Open or Closed?

The force of hurricane Fran a few years ago reminded us that severe weather can often interrupt services. Thanks to our dedicated Library staff who dodged trees and power lines, we were able to open the day after Fran and stay open throughout the weekend. However, there may be times when it is too dangerous to travel to work or keep the Library open late at night.

So what happens when snow and ice storms create dangerous conditions? Does the Library open? Even during severe weather, we try to keep the Library open during its regular hours. However, it takes a certain number of staff members just to open our doors and provide the basic services. During these times of inclement weather, we need staff who can check out materials, answer general questions, and be responsible for the security of the building and its resources. Until this critical mass of staff reports to duty, we cannot open our doors.

So are we open or closed? During severe weather, the best thing to do is to call the Library at 660-1100 to see if we are open and what our hours will be for the day.

Has Your Name or Address Changed?

Name and address changes for our newsletter may be sent to **DUMC Box 3702**, our email address at **mclnews@mc.duke.edu**, or you may complete the Mailing List Web Form at <http://www.mc.duke.edu/mclibrary/forms/mailist.html>. Our online mailbox will be checked daily, Monday-Friday.

Visit

the

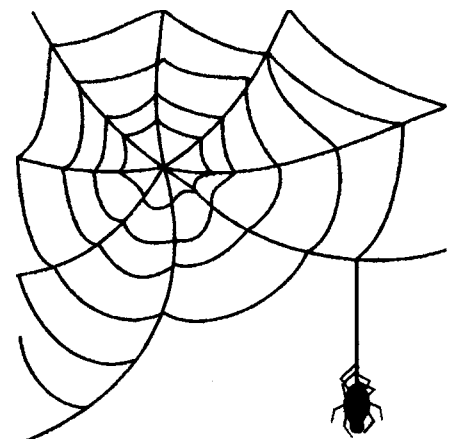
Medical

Center

Library

on the

Internet at:



<http://www.mc.duke.edu/mclibrary/>



Library Educational Offerings



The following classes will be held in the Medical Library Education Center (MLEC), Room 104 on the Lower Level of the Library.

Database Classes

OVID MEDLINE SYSTEM
(Registration not required)

Ovid Part I: Basics Using Telnet

Participants are not expected to have used Ovid

11:00 am - 12:30 pm

Tuesday, February 2; March 2

Ovid Part I: Basics Using Web Gateway

Participants are not expected to have used Ovid but should be familiar with the Internet and Netscape

11:00 am - 12:30 pm

Tuesday, February 9; March 9

Ovid Part II: Advanced Strategies

Participants are expected to have experience using Ovid

11:00 am - 12:30 pm

Wednesday, February 17; March 17

3:00 pm - 4:30 pm

Thursday, February 25; March 25

GRANT INFORMATION ON THE WEB

~ SPIN Database and Others ~

9:00 am - 10:30 am

Tuesday, February 9

INTRODUCTION TO REFERENCE MANAGER/ENDNOTE

(By Appointment Only)

Call Andy Eisan

660-1128

Internet Classes

Registration is required. Sign-ups will be accepted by phone at 660-1124, via email sent to Connie Schardt, Education Coordinator, at schar005@mc.duke.edu, or via the Web at <http://www.mc.duke.edu/mclibrary/services/regform.html>.

Introduction to the World Wide Web Using Netscape

10:00 am - 12:00 pm

Tuesday, March 16

Searching and Evaluating Information on the World Wide Web

10:00 am - 12:30 pm

Tuesday, March 30

Other Classes

BASICS OF LIBRARY USE

(By Appointment Only)

Call Betsy Adams

660-1131

INTRODUCTION TO SOURCES FOR HEALTH STATISTICS

10:00 am - 11:30 am

Thursday, February 18; March 18



Registration is not required for the Database Classes



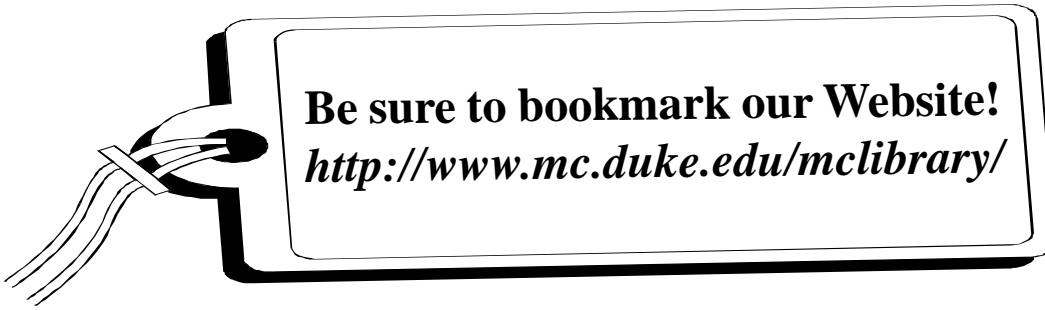
For the most current class schedule, connect to the Library's Website at <http://www.mc.duke.edu/mclibrary/services/schedule.html>.

*Duke University Medical Center Library News is published bimonthly.
Pat Thibodeau, Acting Director Beverly Murphy, Editor*

Editorial Board:

*Mary Ann Brown
Iris Gale*

*Julie Garrison
Maurice Reece*



We Need Your Help!

The Medical Center Library is currently conducting a research study to determine the effectiveness of using electronic journals (e-journals) to fill Interlibrary Loan (ILL) and document delivery requests. Your participation in completing the following survey would be appreciated.

Please return this survey to the Medical Center Library (Box 3702) by March 1, 1999. Thank you for your time and input.

1. How important is it for the overall look of an electronic article to be the same as the hardcopy version?

Not important _____ Somewhat important _____ Very important _____

2. Will it be a problem if the pagination of an electronic journal article is different or non-existent as compared to the hardcopy original?

Yes _____ No _____

3. Will it be a problem if the images (graphs, tables, or charts) are not:

a. the same size as the original? Yes _____ No _____

b. in the same location as the original? Yes _____ No _____

c. as clear as the original? Yes _____ No _____

To subscribe to *Medical Center Library News* or to receive notification by email when the Web version is available, please complete the information below and return this sheet to the **Medical Center Library, Box 3702, DUMC**. You may also send email to mclnews@mc.duke.edu, or complete the Mailing List Form at <http://www.mc.duke.edu/mclibrary/about/news/mailform.html>.

Name _____

Department _____

Box Number _____

Email Address _____

(Must include if email notification is being requested)

Email notification only? Yes _____ No _____

Paper copy only? Yes _____ No _____

Both? Yes _____ No _____

DUKE UNIVERSITY MEDICAL CENTER
BOX 3702 MEDICAL CENTER LIBRARY
DURHAM, NORTH CAROLINA 27710

First Class