

shifting dullness

Issue No. 4

February 12, 1982

MANDATORY VACATION ANNOUNCED

In a special class meeting conducted by Dr. Christakos, the first-year students were informed that they would not have the option of starting their first rotation in the summer. Instead, all must start in the fall. Dr. Christakos explained that there would not be room in the summer since many second-year students had to be accommodated during that time. This shift from previous rotation schedules was a result of the rotation in Family Medicine added last school year.

STUDENT INPUT IN THE AAMC

The Organization of Student Representatives (OSR) is the student arm of the Association of American Colleges (AAMC). The OSR consists of one student representative from each of the 126 American medical schools. It ensures representation of student interests in the only major body whose sole purpose is furthering medical education. The activities of the AAMC include political lobby efforts in Washington, D.C., minority affairs, study groups, and women in medicine. At the recent national meeting key issues included the effect and extent of federal budget cuts in student aid and the status and role of the National Board Exams. The OSR provides student input on all of the major issues. To find out more about the OSR, the AAMC and how they can help us as students contact Duke's Representative, John Dietz at P.O. Box 2811, or 286-9653.

SUPPORT GROUP FOR WOMEN

A group is being started in Durham to help the problem of depression. The organization Dawn (Depression Awareness Women's Network) is a support group for women who are trying to overcome depression and related problems of isolation, stress, and anxiety. DAWN offers an opportunity to be with others and to share your worries and insights about coping. This is not a professional therapy group but an informal forum for discussion, education, and mutual support as well as a place to meet people and meet friends. The first ten-week group will meet on Tuesdays from 7-9 p.m. at the YWCA. A registration fee of \$6.00 is required. DAWN is a program of the YWCA women's center.

HEALTH PROFESSIONS SCHOLARSHIP

The Army Medical Department is offering Health Professions Scholarships to medical students. The deadline for applications is May 3, 1982, and the selection board will meet May 17-28, 1982. See Ms. Nell Andrews, Financial Aid Coordinator, for details.

PART-TIME JOBS AVAILABLE

Central Laboratory Collection Service has openings for third and fourth year students who know how to draw blood. For those interested in earning some extra money, positions as early morning blood drawing technicians are available. Contact Margaret Pollard at 684-3975 about current openings and get in touch with Dan Moore at 684-2231 concerning evaluation and certification.

STAFF REPORT

A big welcome goes to Andy Umhau, who volunteered to be our Puzzle Editor for the rest of this year. Andy is a first-year student from Chevy Chase, Maryland who attended Davidson College.

If you are interested in submitting your own creations, send them to Andy or put them in the Shifting Dullness box in Jeanne Lee's office.

FINANCIAL AID NOTICE

Financial aid application packets for 1982-83 must be picked up in the Office of Financial Aid the week of February 15th.

EDITORIAL

Unfortunately, the Mail Room serves as a source of frustration for medical students. Some students have their mail sent elsewhere because of lack of faith in its reception at their student box. When boxes overflow, excess mail may be kept for weeks on a shelf behind the counter. Clearly, separate boxes for each student would be far preferable to the present situation of box sharing by three students. However, even though most medical students would pay for their own box, expansion of the Mail Room is unlikely at present.

Shifting Dullness has received numerous complaints from students about failure to receive a copy every week. Since our staff stuffs the boxes directly, there should be no reason for not receiving an issue. Therefore, please be considerate of your box-mates by not throwing out their mail when you receive yours. After all, sharing a post office box is a matter of mutual trust.

Shifting Dullness is the weekly newsletter of the Davison Society, Duke School of Medicine, Durham, N.C. Published material does not necessarily reflect the views of the Davison Society or of Duke University Medical Center.

Editor Walter D. Pharr
Associate Editor Catherine Treseler
Reporter at Large Stephanie Newby
Puzzle Editor Andrew Umhau
Typist Eleanore Reiss
Printer D.U. Printing Service

QUACKERS WANTED

Send your favorite duck jokes to Shifting Dullness. Those without excessive obscenity will be printed in a later issue. Include your name, s'il vous plaît.

STILL PUZZLED?

First of all, Shifting Dullness apologizes for the typographical error of misspelling Dr. Somjen's name in the Hungarian scientist puzzle solution.

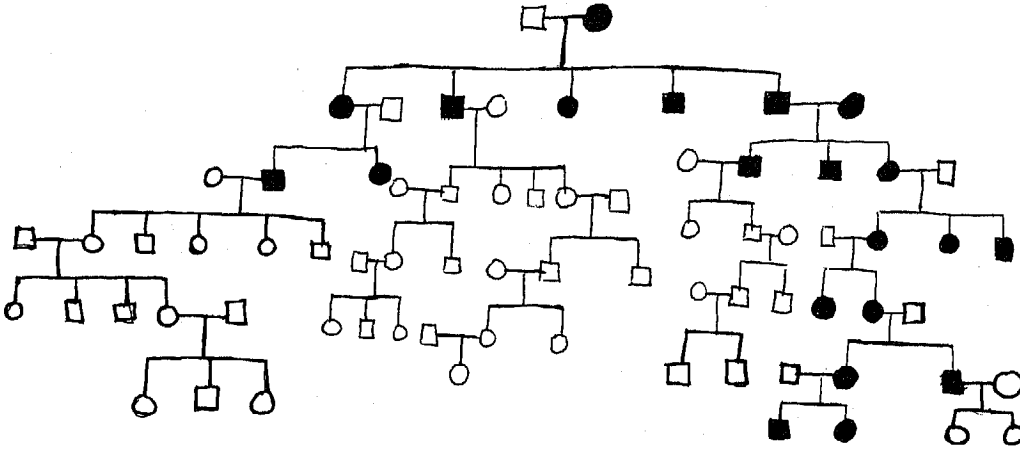
The solution to the snowflake problem was actually quite simple according to Steve Gulevich: "The snowflake is a curve with a finite area ($\frac{4s^2\sqrt{3}}{10}$) bounded by an infinite perimeter."

Congratulations to Carol Adams, whose name was drawn from the nine correct answers to the State Motto contest. She will receive a Gift Certificate to Baskin-Robbins. Qualifying for the Grand Prize drawing are Mary K. Gentry, Logan Porter, Tracey Brown, Don Holleman, Eric Bass, Bill Lewis, Brian Mitchell, and Harry D'Agostino.

Answers to all future puzzles will be due on Wednesday afternoon following publication. Please return all solutions to the Davison Society Ballot Box unless otherwise noted. Merci!

A GENETICS PUZZLE

By Steve Gulevich, MS I



You have obtained the pedigree above from a genetic trait you have been studying. There is no incomplete dominance. Describe the mode of inheritance of this trait.

NATIONAL APPLICANT POOL TO MEDICAL SCHOOLS DECLINES

A study by the Association of American Medical Colleges projects that the total number of applicants for the medical classes beginning in 1982 will be 35,600. This is a decline of three percent from those who applied for entrance in 1981. The largest single contributor to the decline is the white male applicant pool which dropped two percent in 1981 and is projected to decline five percent for 1982. Female applicants increased by 9.5% in 1981 but are expected to drop by .6 percent this year. Minority applicants show little or no change over last year except that American Indian applicants are expected to decrease to the level of four years ago.

-John Dietz

SUMMER EMPLOYMENT OPPORTUNITY

Summer Research Fellowships are available at the Medical College of Wisconsin through a Training Grant awarded by NIH to that institution. They provide an opportunity of medical students to conduct research at the Medical College of Wisconsin for a three month interval with a stipend of \$420 per month. Any student in good standing at a U.S. medical school is welcome to apply. Further information and application forms are in Dr. Christakos' office. The deadline for receipt of application for the summer of 1982 is March 1, 1982.

You're learning everything about your profession...except how to plan it.

After years of studying and training, you'll be prepared to provide professional service and care. But what about managing a profitable practice...does your curriculum also include the principles of business management and financial planning?

That's where MAPS comes in. MAPS is the Mutual Association for Professional Services -- a non-profit membership organization dedicated to solving the diverse administrative and economic problems of students and practicing professionals in the health care, legal and accounting fields.

MAPS representatives offer personalized solutions to the problems you encounter -- providing the specialized resources and planning expertise that will help you now and throughout your professional career. From confidential loans and insurance programs to medical jackets and equipment leasing to name just a few.

All from one convenient source...to save you time and money.

For more information on MAPS, contact your local service office...and make sure your career begins the way it should...professionally.



Mutual Association for Professional Services

REPRESENTATIVES:

STEVE CARSCADDEN
CHRIS HOOVER
PAUL JANSEN

TELEPHONE:

682-3286
828-4503