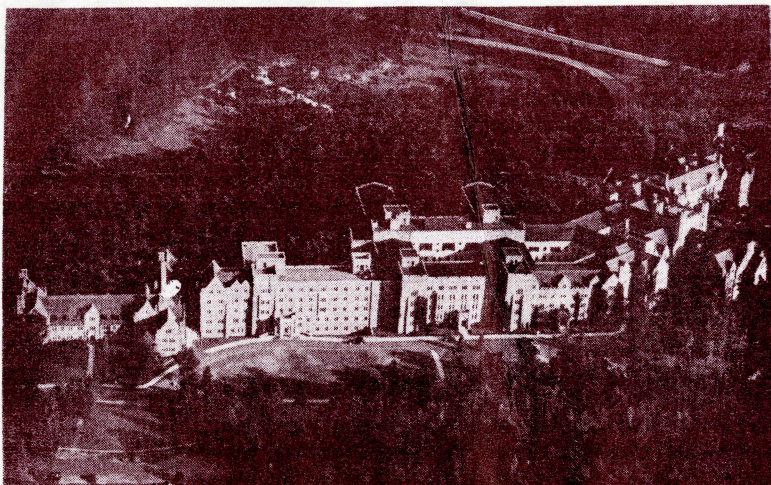


10-3

1942

Duke Hospital
DUKE UNIVERSITY CAMPUS
DURHAM, N. C.



A BRIEF HISTORY OF DUKE HOSPITAL

Duke Hospital and its Public Dispensary were opened for patients on July 21, 1930. 158,225 different patients have been examined, diagnosed, and treated, 1,017,113 patient days of service have been given, 48,000 operations were performed, and over one million laboratory examinations made in the first ten and one-half years. It has a daily capacity of 604 bed patients and 750 ambulatory, or able-to-walk, patients in its various clinics.

The Hospital buildings, plus an endowment sufficient to pay a portion of the operating expenses, were given by the late James B. Duke. The buildings are constructed of native stone quarried at Hillsboro; the trimming is white Indiana limestone. Every effort is made to develop and provide the best possible equipment for the diagnosis, proper care, welfare and comfort of the patients.

The Hospital applies all funds received from its endowment, and from the Duke Endowment, in assisting patients to secure a quality of treatment which usually is far more expensive than they can afford. In the first ten and one-half years the Hospital and Public Dispensary spent from these sources \$2,704,342.00 more than it received from patients. This amount represents the differ-

(Continued on page 4)

THE SERVICES OF DUKE HOSPITAL

PUBLIC DISPENSARY

Rates—Only indigent (poor) patients may be examined, diagnosed, or treated in this division. The charges vary from 25c to \$5.00, plus actual cost of X-rays and other materials used. Patients are required to give satisfactory evidence that they are objects of charity or semi-charity before being admitted to this division.

Schedule of Public Dispensary Clinics—NO CLINICS ARE HELD ON SATURDAYS, SUNDAYS, OR HOLIDAYS. PATIENTS MUST REGISTER AT THE TIMES LISTED.

Registration hours: 12:00 o'clock noon.

General Medicine
General Surgery
Neuro-Surgery
Obstetrics and Gynecology
Women's Diseases
Eye
Children's Diseases
Dentistry
Urinary and Kidney Diseases
Ear, Nose and Throat
Tumors
Bone and Joint Diseases

Daily at Noon Except *Saturday, Sunday, and Holidays*

In Following Clinics Patients Seen by Previous Appointment Only:

Psychiatry (by appointment only): *Daily except Saturdays, Sundays and Holidays.*

Syphilis: Children *Thursday 9:00 a.m.*

Adults *Thursday 6:00 p.m.*

Asthma, Hay Fever, Diabetes and Infant Feeding: *Tuesday 9:00 a.m.*

Bronchoscopic: *Monday 9:00 to 12:00 noon.*

Pneumothorax (Chest and Tubercular): *Thursday 9:00 a.m.*

Endocrine (Sterility, Menstrual Disorders, etc.): *Tuesday, Wednesday, Thursday, 8:30 to 12:00 noon.*

Cystoscopy: *Wednesday and Thursday, 1:30 to 5:00 p.m.*

Dermatology: *Wednesday, 9:00 to 12:00 noon.*

Neurology: *Wednesday, 9:00 to 12:00 noon.*

PRIVATE CLINICS

Rates—Upon application. Every effort is made by the hospital staff to supply full medical diagnosis and treatment within the means of all who apply, whether pauper or rich man. The rates in this division vary with the amount of work to be done and the circumstances of the patient. A letter addressed to the Superintendent of the Hospital explaining your complaint and circumstances will be forwarded to the proper private physician or consultant.

Schedule of Private Clinics—NO CLINICS ARE HELD ON SATURDAYS, SUNDAYS, OR HOLIDAYS, EXCEPT BY SPECIAL APPOINTMENT.

All services—Hours: *From 8:30 a.m. to 5:00 p.m., daily.*

HOSPITAL ADMISSION

Charity—All charity (part of cost paid by his county, city, church or welfare association), and semi-charity (part of cost paid by patient or his family) patients must be examined in the Public Dispensary before the question of admission to the hospital will be decided. Often all beds are filled—Have your family physician or welfare officer write, wire, or phone the Assistant Superintendent in Charge of Admissions, Duke Hospital, Durham, N. C., for appointment or reservation.

Private—Private and semi-private patients should make their reservations in advance by communicating with the Assistant Superintendent in Charge of Admissions or the member of the staff to whom the patient is referred.

Rates of the Hospital—Contrary to the practice in most hospitals, the Duke Hospital does not bill separately for ordinary extra hospital fees such as X-rays, drugs, dressings, operating room, laboratory work, special tests and procedures, etc. They are included in the room rate. *No one may be admitted without paying cash in advance for the entire estimated stay or presenting a guarantee from a responsible financial, business or welfare organization. Any unused portion will be refunded.*

CHARITY—\$9.00 first day, \$2.00 each day thereafter—Refund of \$2.00 per day for every day overpaid (must be paid by city, county, religious or welfare organization).

SEMI-CHARITY—\$10.00 to \$13.00 first day, \$3.00 to \$6.00 per day thereafter—Refund of \$3.00 to \$6.00 for every day overpaid.

SEMI-PRIVATE—\$14.00 to \$16.50 first day, \$4.00 to \$6.50 per day thereafter—Refund of \$4.00 to \$6.50 for every day overpaid. *Doctors fees in addition.*

PRIVATE—\$16.00 to \$25.00 first day, \$6.00 to \$15.00 per day thereafter—Refund of \$6.00 to \$15.00 for every day overpaid. *Doctors fees in addition.*

VISITING HOURS

For the best interests of yourself and your fellow-patients visiting hours must be observed by your relatives and friends. The hours for visiting in the various Wards are as follows:

Howland (children): From 1:00 to 2:00 p.m., daily and Sunday.

Welch, Osler, Halsted, McDowell, Strudwick, Long: From 1:00 to 2:00 p.m., and from 6:30 to 7:30 p.m., daily; from 2:00 to 4:00 p.m., and from 6:30 to 7:30 p.m., Sunday.

Sims: From 2:00 to 3:00 p.m., and 6:30 to 7:30 p.m., daily and Sunday.

Holmes (public ward): From 2:00 to 3:00 p.m., and 6:30 to 7:30 p.m., daily and Sunday.

Holmes (private): 10:00 a.m. to 12:00 noon; from 2:00 to 5:00 p.m.; from 7:00 to 9:00 p.m., daily and Sunday.

Cabell, Cushing, Drake, Minot, Williams: From 10:00 a.m. to 12:00 noon, from 2:00 to 5:00 p.m., and 7:00 to 9:00 p.m., daily and Sunday.

Nott, Prevost: From 3:00 to 4:00 p.m. and from 6:30 to 7:30 p.m., daily and Sunday.

Meyer: From 2:00 p.m. to 3:00 p.m., daily. Saturday 2:00 to 3:00 p.m., and 6:30 to 7:30 p.m. Sunday 2:00 to 4:00 p.m.

Matas (children): 10:00 a.m. to 12:00 noon, 2:00 to 5:00 p.m.; 7:00 to 9:00 p.m., daily and Sunday.

WILLIAMS: 10:00 AM TO 12:00 NOON
2:00 PM TO 4:00 PM, 7:00 PM TO 9:00 PM

A BRIEF HISTORY OF DUKE HOSPITAL

(Continued from page 1)

ence between the amounts charged the patients and the actual cost of caring for them. Since April 20, 1933, every patient has been required to pay, or have paid for him by some charitable or governmental agency, at least a portion of the cost of his care—yet the balance of the amount given to the people of North Carolina by Duke Hospital exceeds one-quarter of a million dollars annually. As fast as donations, endowments, or amounts received from private patients increase, more of the destitute patients now on our waiting list will be admitted.

Fourteen per cent of the patients come from within a radius of twenty miles, the remaining 86 per cent come from 100 counties in North Carolina and from 36 other states, Canada and Porto Rico. The average distance traveled by the patient is more than seventy miles.

SUGGESTIONS

Your nurse will provide you with a form to be filled out upon your departure upon which all criticisms and suggestions can be made.

If you are having difficulty which should have immediate attention, you will do the Hospital a great service by communicating with the Superintendent.

DUKE HOSPITAL "GUEST CARD"

You may wish to send a friend who is in Duke Hospital a "Guest Card." An engraved card is validated and sent to the patient after the purchaser has paid for one or more day's charges at the Business Office. These cards can be secured at the Hospital Store or at the Business Office.

DUKE HOSPITAL GUEST CARD

DEAR _____

IT WOULD BE PLEASANT FOR US IF YOU COULD BE A GUEST IN OUR HOME TODAY. BUT SINCE YOU CANNOT, THIS DAY IN DUKE HOSPITAL IS PROVIDED YOU AS AN EXPRESSION OF SINCERE GOOD WISHES.

MAY THIS DAY TAKE YOU ONE STEP NEARER TO RECOVERY AND TOWARD SEEING YOU AGAIN IN OUR OWN HOME.

YOUR FRIEND _____