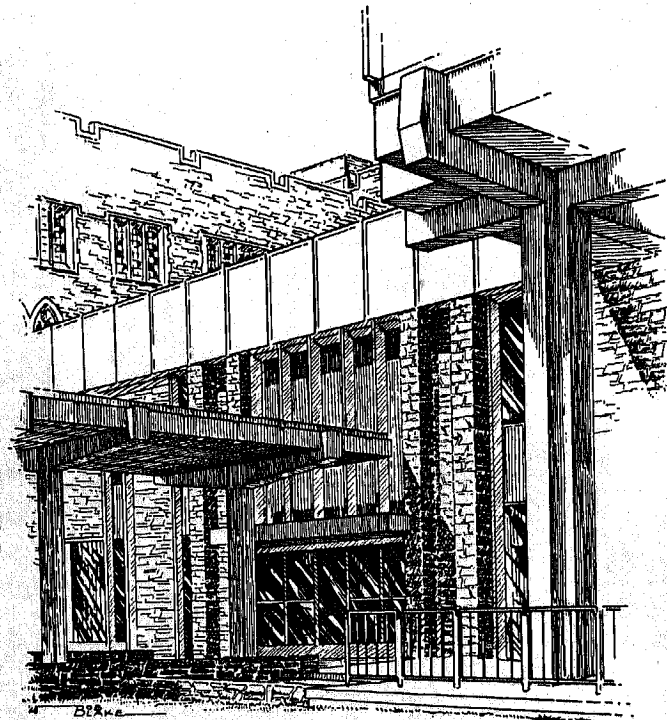




SHIFTING DULLNESS



DAVISON SOCIETY NEWSLETTER
DUKE UNIVERSITY SCHOOL OF MEDICINE

DAVISON SOCIETY OFFICERS
1968-69

President.....Eddie Hoover
Service V. P.....Lyndon Waugh
Social V. P.Mike Baten
SecretarySusan Prince
TreasurerMike Nash
Sr. Class Pres. ...Jack Crowe
Jr. Class Pres. ...John Horton
Soph. Class Pres. .Joe McCormack

Sr. Representatives:

Neil Dunn
Steve Koff
C. D. Smith
Dick Dixon

Jr. Representatives:

Barney Black
Phil Gold
Jim Kelly
Joe Miller

Soph. Representatives:

Elaine Belmaker
Douglas Lloyd
Bill Welch
Jim Wilson

Freshman Officers To Be Elected

COMMITTEE CHAIRMEN BY APPOINTMENT

Community Health..Linda Green
Curriculum Eval. .John Horton
Elaine Belmaker
Symposium Comm. ..Doug Lloyd
Parliamentarian...Jim Wilson
AesculapianDuane Carbalt
Jack Chang
Steve Foster

Liason/County &

State Med. Soc. ..Doug Lloyd
White Coat Laundry.Pat Boleman
Georgianna Jones

Student Directory.Med-Dames

Student-Faculty Show:

Paul Mohl
Mike Nash
Walt Miller

NATIONAL SAMA OFFICERS
1968-69

President C. Clement Lucas UNC
Vice-Pres. Christian Ramsey Emory
Treasurer Ed Martin Kansas
Exec. Director Charles C. Hewitt

Region I Vice-Pres.. Jim Henning UNC

DUKE NATIONAL COMMITTEEMEN

Associate Chairman,
Standing Committee-
Medical Education ...Jay Cook

Ad Hoc Committee on
Medical Education ...John Horton

Region I Repre.,
Standing Committee-
Community Health....Don Horne

Ad Hoc Committee,
Community Health ...Linda Green

Ad Hoc Committee,
International Affairs-Joe McCormack

National SAMA Political
Action Study Committee - Lyndon Waugh

Chairman, National
Ad Hoc Committee on Ideas - Peter Scardino

Region I Repre.,
Ad Hoc Committee on Ideas - Doug Lloyd

National Council
Subcommittee on
Research Opportunities - Peter Scardino

It is unusual to have the national President and Vice-President both from the same region. This plus the array of local students on key committees will give Duke and Region I good representation on the national level this year.

All of the above committees both local and national need volunteers and/or ideas. Please contact directly the chairman of the committee in which you are interested.

SAY FOR ME...

This month's special submitted by Eddie Hoover

Patient: U. S. Health Care
Parents: Mr. & Mrs. A. M. Asmond

CHIEF COMPLAINT: "There's something wrong with my delivery system".

PRESENT ILLNESS: This patient was in relatively good health until the late 1940's-early 1950's when she noticed the gradual onset of Analysis Paralysis originating from her central motor area with resultant inability to move forward. Initially she could produce slow motor activity in a forward direction, but this function has gradually deteriorated. Prior to the onset of this illness she had enjoyed good health having received impetus for schievement by Post WWII advancements in knowledge and technology and good behavior allowances from friends in Washington, D. C. to continue her education and training. She decided at an early age to devote most of her effort to helping others as those in D. C. had so generously helped her.

With advancing age she acquired a prodigious amount of practical knowledge and know-how and set out to perform her previously mentioned task of helping others. The patient continued to enjoy good health and performed well on her job. Gradually she began to redirect her efforts in smaller specialized areas with emphasis on expertise. She volunteers that this worked well as her colleagues in the field were taking up the slack created by her leaving. This was followed by a crescendo aloofness concerning the welfare of her ex-colleagues. Next came excessive professional self-esteem ushered in by apparent parental permissiveness. This resulted in a situation in which the know-how was there, but a large segment of the population was not being adequately cared for. It was about this time that the patient became symptomatic with her present disease. Characteristically, her lower limbs were afflicted first because of their dependency and inability to change positions without assistance and incentives provided by the upper neurons. This was followed by "middling" difficulty characterized by N & V, grossly bloody stools, flatus and frequent eructations. These symptoms are thought to be related to the fact that this system, having both sympathetic and parasympathetic innervation with direct connection to the upper motor neurons, is spared somewhat thus retaining the ability to react to painful stimuli. It is also thought that the insult to the lower system elicits a reflex "middling" response in this disease.

The final characteristic feature of Analysis Paralysis is relative sparing of upper extremities, thought to be a function of direct connections with para-vital center upper motor neurons. It is clear however that the entire system suffers. The upper exeremities suffer because of increased metabolic demands caused by "middling" malfunction and also because of potential total system stand-still secondary to lower extremity demise.

FAMILY HISTORY: Mother and Father both L & W, but senile

SOCIAL HISTORY: Chronic, excessive professional self-esteem

PHY. EXAM: Heent - nearsighted, Neurological - Analysis Paralysis

LAB: EKG reveals a para-systolic focus in the vicinity of the D.C. conduction bundle firing retrograde P waves with occasional coupled beats, but primarily pacemaker competition.

ENZYMES: ? inducible transaminases and activases

- IMPRESSION: 1. Something wrong with her delivery system
 2. Excessive professional self-esteem
 3. Nearsightedness and conservatism

- DISPOSITION: 1. Increased number of health professionals trained in updated health schools
 2. Consumer participation in health care and planning
 3. Multi-disciplined health teams of professionals
 4. Group practice
 5. Universal pre-paid health insurance
 6. Outreach to community from professional institutions and persons to provide comprehensive neighborhood &/or regional health clinics
 7. Admission of more minority applicants to medical, dental and nursing schools
 8. Application of new technology

EDGE MONT

Medical and nursing students from Duke and UNC have been working in the Edgemont Community this fall to establish a screening clinic with facilities for treatment as well. The combined group has acquired the use of a building at 905 1/2 Angier Avenue and plan to begin seeing patients on October 28. Students with previous clinical experience will handle most of the clinic workload under supervision of licensed MDs from Duke & UNC. Clinic hours are 6-9 p.m. on Monday nights. There will be no charge to the patients who will be seen only by appointment. Five examining rooms will be used to see 15-20 patients nightly. Additional clinics will depend upon need and available resources.

This project grew out of work this summer done by UNC students in presenting health education programs, and by Duke and UNC students who performed 84 camper physicals so that boys age 9-11 could attend Boy Scout & YMCA camps. The Duke faculty advisor for the Edgemont Clinic is Dr. B. Nashold. Dr. S. Katz will serve as a consultant on problems related to establishing the pediatric phase of the clinic.

CONCERN

COMMITMENT

ACTION

N	S
E	A
W	M
	A

These are the guiding principles of the "New SAMA" under President C. Clement Lucas of UNC. With Lucas at the helm SAMA has taken an active role in community health, medical education, medical ethics, international student exchange, benefits to members and other areas to be found in the September issue of The New Physician.

Lucas and other members of the SAMA executive council recently met with HEW officials in Washington to discuss student participation in establishing health care programs. They were virtually assured of a program, sponsored by HEW, to establish 300-350 positions for medical students to observe the health care delivery systems in deprived areas for two months, following a two week stay in Washington, D. C. to study HEW's role in medical care. Stipends for the 2 1/2 months will be between \$1000 & \$1500.

REMINDER TO FRESHMEN: Membership committee officials will collect National SAMA dues Friday, October 18, after Orientation lecture. The total amount is \$5.00. Checks or cash.

In keeping with the trends of involvementship, the Davison Society is planning an assault on West Campus. Neal Dunn suggested that we might begin with a "big brother" type program for pre-med students. This would involve the unstructured use of a minimal time commitment to provide the not-to-be-found-anywhere-else answers about medical school. In addition we would like to involve the pre-med in meaningful learning experiences within the medical center as opposed to wasted hours in conferences or the OR. Undergraduate advisors and the proper medical center heads are being contacted presently. Interested medical students please contact Steve Koff at Box 2768 or at 383-4198 after 6 p.m.

On October 22, 1968 at 7 p.m. in the hospital amphitheater there will be a meeting of all medical students interested in contributing to or working on the committee on medical education. This committee will be responsible for curriculum evaluation, working with the faculty on existing and future electives, working on research for SAMA's national committee on medical education, and perhaps organizing some extra-medical center educational programs.

People with strong ideas or feelings about any aspect of medical education should organize their thoughts before the meeting so that full consideration and debate with meaningful results will evolve for further consideration and practical application.

DR. ROCKWELL JOINS STUDENT HEALTH

The medical center has recently created a new staff position to help fill the need for a full time psychiatrist in the student health department. This was an area of major concern to the University, SGA and SAM last year; thus, his appointment is welcomed. Dr. Rockwell is a "m.d." trained psychiatrist and has already taken many steps to avail his services to the students desiring care. His office is located in the sub-basement psychiatric clinic area, and visits are by appointment preferably, but drop-in students will be seen as rapidly as possible. Dr. Rockwell's office will join with the existing psychiatric service on East Campus to provide care for all students in the University Community.

NEURAL SCIENCES SOCIETY

In cooperation with the Departments of Psychiatry, Neurology and Neurosurgery, a student society to consider interests in the neural sciences is currently being formed by interested students. The principle aims of the society will be to bring students into contact with major figures in various fields of neuro-science, and to facilitate contact between students interested in the neural sciences as a career. Programs will include guest lectures by prominent speakers and less formal discussion groups at the homes of individual members. If interested please contact Brian Davis, Box 2717. An organizational meeting will be held October 23, 1968 at 5 p.m. in Room M110, Davison Building.

A specialist is one who can tell the kin that the patient died cured.

A nudist camp: Where men and women go to air their differences.

A series of six seminars will be presented by the Davidson Society on medical economics beginning October 22, 1968. The details are still being worked out, but it is anticipated that topics covered will include the physician's estate, wills, trusts, various types of insurance (not practice, life, health, annuities, etc.), loans, stocks, bonds, management organization and banking services. These programs are tentatively scheduled for Wednesday nights from 7-9 p.m. in the hospital amphitheater. Mr. Chris Crenshaw, a local insurance agent, and his associates are providing the speakers, all of whom are experts in their respective areas. More information will be forthcoming this next week.

The Society had intended to have Representative Nick Falifianakis speak this month concerning the government and medicine, but due to the pressures of campaigning he will be unable to research this topic until after the elections.

Later programs will include drug abuse, legal medicine, medical ethics and medical history. It is our hope that house staff and senior staff will participate in these programs in addition to medical students. These programs are designed to parallel and supplement the Dean's Hour in providing exposure to related medical and non-medical problems. Please contact Doug Lloyd at 682-2787 or Box 2779 with ideas or suggestions.

Good judgment comes from experience, and experience comes from poor judgment.

A regional SAMA workshop on student community health activities is scheduled for October 26, 1968 in Chapel Hill, N. C. Delegates from all the medical schools in Region I will attend this conference which is the first of its kind in this Region, and one of the first SAMA sponsored regional conferences in the nation. The purpose of the workshop, as stated by Region I Vice President Jim Henning of UNC, is purely practical. A series of small group discussions will be held on the mechanics of initiating and expanding community health projects run by health science students. It is also hoped that time will permit a site-visit to the combined Edgemont Clinic facility during the meeting. The aim is to maximize one-on-one exchange between the experienced and inexperienced in this field.

Three delegates have been invited to attend the workshop from each of the 12 medical centers in this region.* In addition, invitations have been issued to a number of extra students who are particularly well informed about student community health projects, and who will be able to contribute substantially to the discussions.

The conference will hold sessions all afternoon and into the night of the twenty-sixth. A summarizing session will be held the following morning. Topics of discussion will include student-run clinics and various sex, career, and health education programs. If you are interested in attending the conference please contact Don Horne, Box 2764. If you are interested in working on projects of this type on the local scene contact Linda Green, Box 2770.

*The only requirements for delegates is that they be health science students, and intensely interested in leading student involvement in community health projects

AWARDS

WILSON C. DAVISON SCHOLARSHIP: Established by the Student Government to commemorate the contributions of the first dean, Dr. W. C. Davison, to medical education at Duke University. Its purpose is to enable a Duke medical student to study outside the U. S. The recipient will be designated a "Davison Scholar". Any student is eligible who has successfully completed his second year of medical school. Each applicant should complete a form obtainable from the Associate Dean and return completed before December 31, 1968. One \$500 award annually.

WILSON UNDERGRADUATE RESEARCH AWARD IN MEDICINE: This is an award of \$500 to be given to the Duke senior, who, on the recommendation of the award committee, has performed the best research work during his or her entire medical course. Applicants should submit their papers to the Associate Dean at least three months prior to graduation.

THE TRENT PRIZE IN THE HISTORY OF MEDICINE: The Trent Prize was established by Mrs. Mary Trent Samans in memory of the late Dr. Josiah Trent to encourage students to undertake independent work in the history of medicine and to utilize the resources of the Trent Collection. An annual award of \$100 is offered for the best essay by a Duke medical student on any topic in the history of medicine and allied sciences. Finished papers must be submitted to Mr. Cavanagh, Medical Center Library, by ~~Monday~~ March 31, 1969. Proposed subjects should be discussed with Dr. Long, Dr. Nashold or Mr. Cavanagh.

SMITH, KLINE AND FRENCH AWARD FOR MEDICAL WRITING: An award of \$100 is made annually to the Duke medical student who submits the most meritorious essay describing a piece of research. The paper must show that particular attention has been given to clarity of writing, definition of objectives, presentation of results, and bibliography in correct form. Papers must be submitted to the Associate Dean before November 30, 1968. Students are urged to meet with Miss Margaret Jones, Reference Librarian, who will offer assistance in following above guidelines.

SAMA-DYMB NATIONAL STUDENT RESEARCH FORUM: This forum is to be held on the campus of The University of Texas Medical Branch, Galveston, Texas, April 24, 25 & 26, 1969. Visiting participants will be accommodated by the medical fraternities of the host medical school. Papers in the basic sciences or clinical sciences will be accepted from medical students, graduate students associated with medical colleges, Interns and residents. Interested students please contact your class President for details.

SMITH, KLINE AND FRENCH FOREIGN FELLOWSHIP: The SK & F laboratories offer foreign fellowships to medical students who wish to study in medically underdeveloped areas of the world. A student must have completed his second year of medical school prior to beginning a fellowship, but may apply as early as his freshman year. The fellowship covers travel and all expenses. Deadline for receipt of applications is December 15, 1968. Further information can be obtained from the Associate Dean.

LEGISLATIVE ROUNDUP

TAX STATUS OF PROFESSIONAL CORPORATIONS: Allows corporate tax treatment for MDs forming professional associations. Pending in the House

HILL-BURTON EXTENSION AND HOSPITAL MODERNIZATION: Continues Hill-Burton program with emphasis on hospital modernization.Pending in the Senate

ARTIFICIAL ORGANS, TRANSPLANTATION AND TECHNOLOGICAL DEVELOPMENT ACT: Establishes a Commission on Transplantation and Artificial Organs. ..Pending in the Senate

CHILD HEALTH ACT OF 1968: To improve the programs relating to the health of children and mothers: provides for comprehensive maternal and infant care: limit payment for drugs furnished under Medicare, Medicaid, and Maternal and Child Welfare programs: and authorizes HEW to change methods of payment to providers of services under Medicare Pending in the Senate

DRUGS UNDER PART B OF MEDICARE: Would include certain drugs as benefits under Part B of medicare.Pending in the Senate

MEDICAL RESTRAINT OF TRADE ACT: Prohibits physicians from dispensing eyeglasses; owning pharmacies, drug repackaging firms, etc.Senate Hearings completed-Comm. in Executive Session.

REGIONAL MEDICAL PROGRAM EXTENSION: Extends for five years the Heart Disease, Cancer and Stroke Regional Medical Program. Also extends health programs for migrant workers, and initiates program of treatment for alcoholics and narcotic addicts under the Community Mental Health Centers Act... Passes by the House

HEALTH MANPOWER ACT OF 1968: Extends programs for medical education, allied health professions education, nurse training and public health training. Also extends support for health research facilities..1. Reported by the House (passed by Senate)

NATIONAL EYE INSTITUTE: The Senate passed and cleared for the President this bill which establishes a National Eye Institute in the National Institutes of Health. This bill was amended to change the name of the National Institute of Neurological Diseases and Blindness to the National Institute of Neurological Diseases.

VETERANS DISABILITY: The Senate cleared this veterans bill which makes a number of amendments to the veterans law including an increase of compensation to veterans for service-connected disabilities and authorizes the veterans' administrator to furnish therapeutic or rehabilitative devices to veterans receiving compensation for service-connected disabilities.

The President has signed into law a bill to increase federal payments to community nursing homes for the care of veterans. Authorized payment now is 40% of the cost of care in a VA hospital. Another bill extends for five years the program of grants to states for construction of state nursing home facilities.

GOLDEN APPLE AWARDS
1968

Clinical Staff - ----Dr. W. Rosse

Pre-Clinical Staff - Dr. J. Vazquez

House Staff ----- Dr. J. Douglas

AN OFFICIAL DS WELCOME TO DR.
S. KATZ, PROFESSOR AND CHAIRMAN,
DEPARTMENT OF PEDIATRICS

HAS YOUR
SPLEEN
HYPERTROPHIED?

THEN VENT IT IN THIS NEWSLETTER

WRITE: SHIFTING DULLNESS
BOX 2799

This space paid for by the establishment

ANNOUNCEMENTS

All medical student financial affairs are now handled by Mrs. Mobley in Baker House

Election of Freshman Class Officers will be Monday, October 21, 1968. Ballots will be distributed by mail--Ballot box will be in post office from 8 a.m. until 8 p.m.

In an effort to clutter the DS office with more statistics all seniors are urged to send their name and internship specialty to Jack Crowe, Box 2708

The Thanksgiving vacation will include the weekend for the first time in years.

A reporter on a rural paper, owned by a fussy old lady, wrote up an automobile accident. In the account he mentioned a woman in one of the cars had her breasts lacerated. The print owner demanded he delete the word "breasts". The reporter did as ordered and rewrote the phrase: "The woman had her (*) (*) lacerated."

DO YOUR OWN THING AT
THE FALL STUDENT-FACULTY
PICNIC. DETAILS LATER