

A large, abstract watercolor splash in shades of blue and teal dominates the center of the image. The splash has a textured, organic appearance with various tones of blue, from light sky blue to deep navy. Below the main splash, there are smaller, scattered splatters of similar colors, creating a sense of movement and depth. The background is a clean, bright white.

# EVERYDAY DISASTER

Duke University Medical Center Archives



DUKE MEDICAL CENTER ALUMNI NEWSLETTER

BULLETIN OF DUKE UNIVERSITY

Willy Davison And The Doctor Factory

The School of Nursing

THE DAVISON CORE 1960-2000

A Old Innocence Celebration

Duke University

Graduation 2001

Duke Hospital

Time Savers INSTRUCTION SHEETS

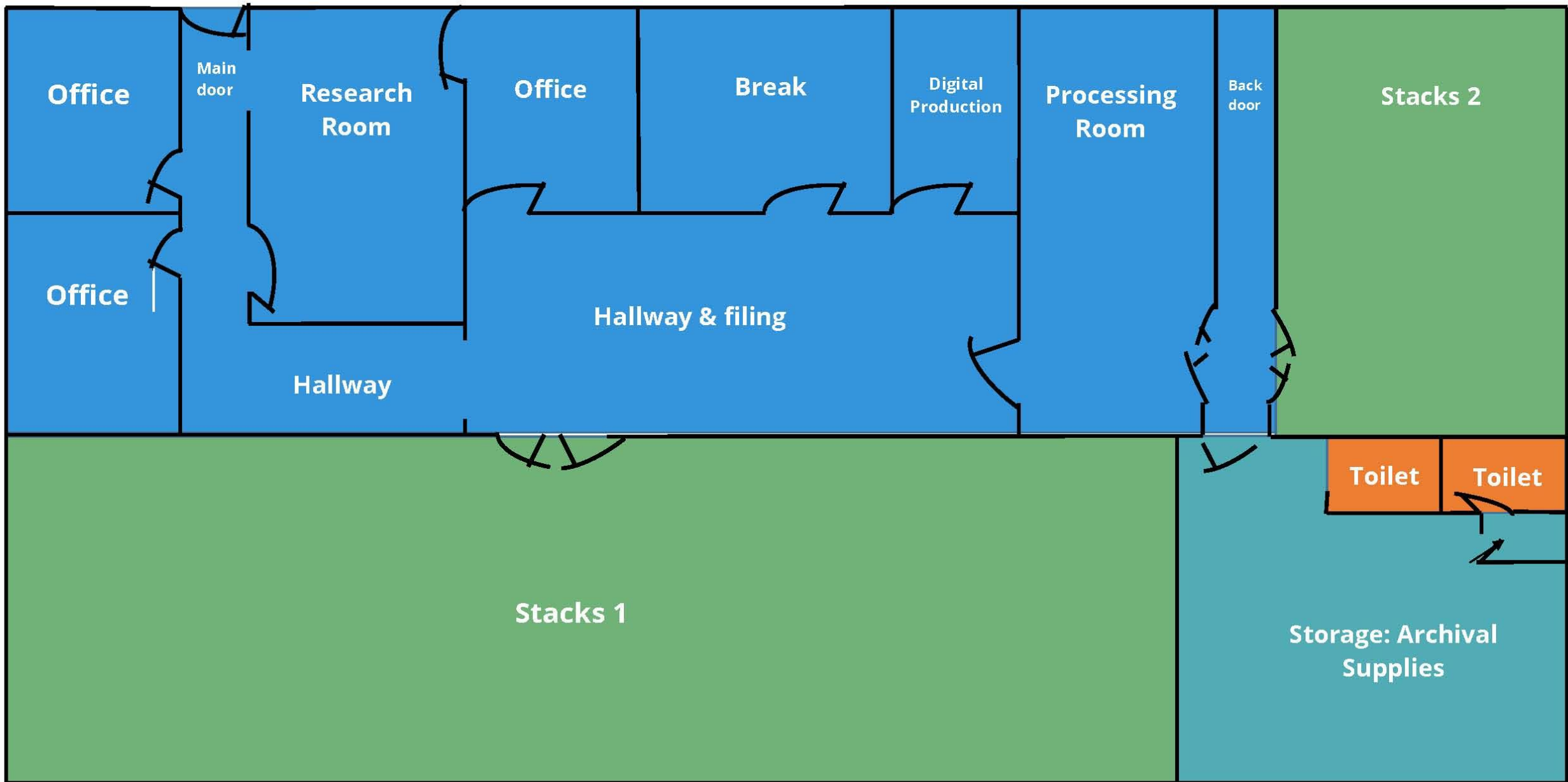
Zoe Lerner  
Melvin Fishman  
Joe Miller  
David Miller  
Stellman

Chief Residents 08-09 University Medical Center 1960-01

78 AESCULAPIAN







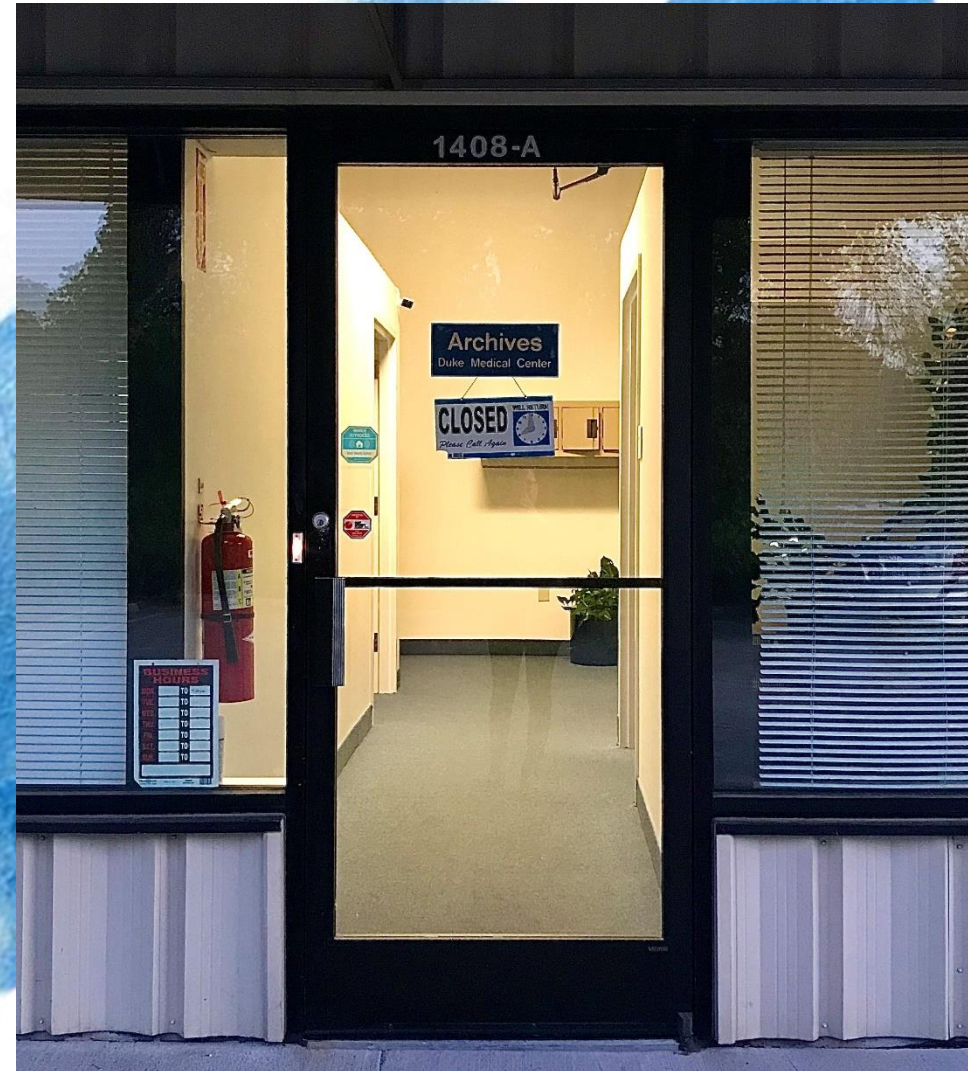


# THE EVENT



Thursday, 7/19

# The Day the Toilet Overflowed



# Water is Discovered

## Friday, 7/20

Jul 20, 2018, 6:44 AM

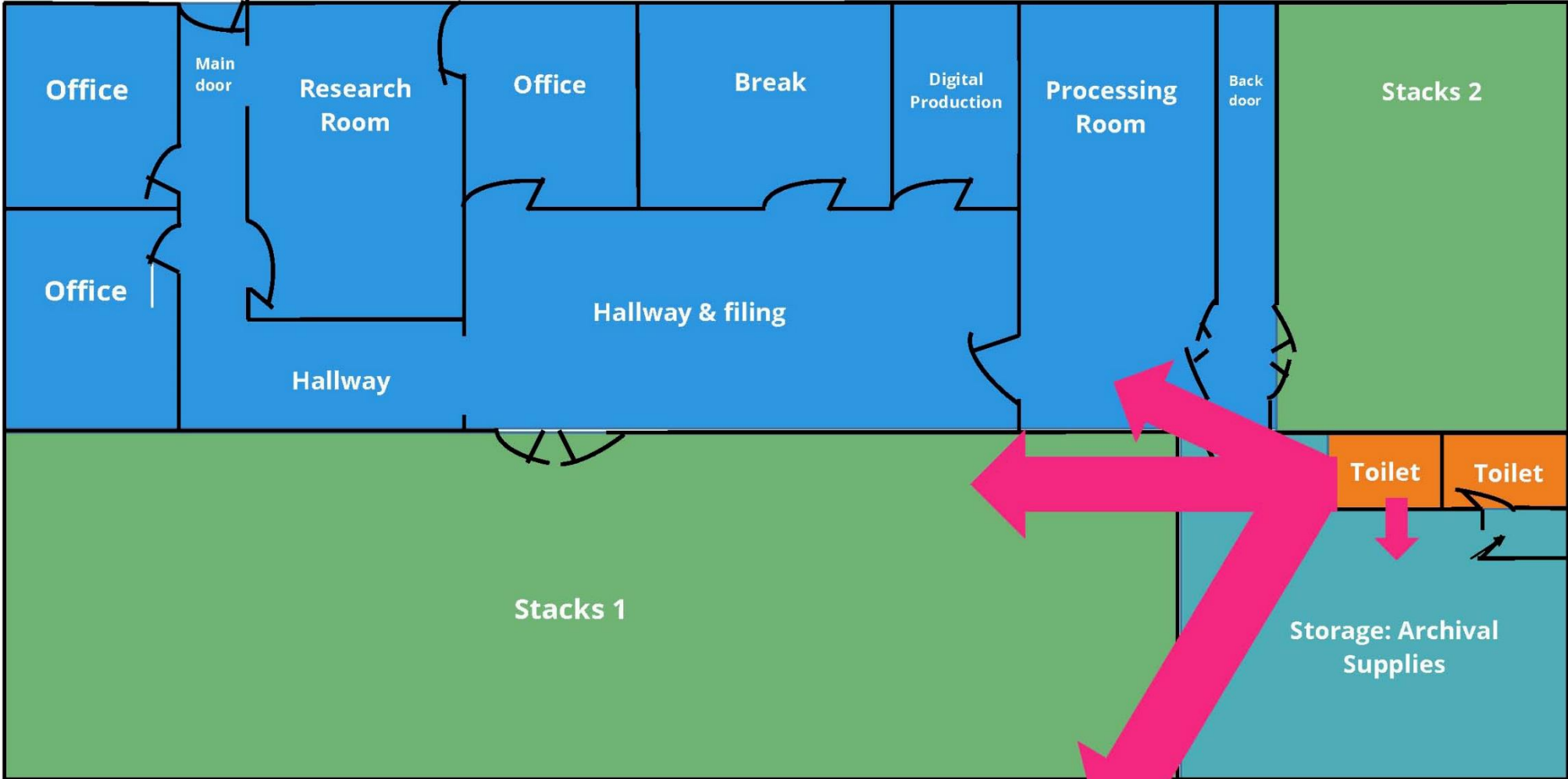
Russell Koonts

RK

Get in as soon as possible. We have a serious water issue

# Water is Discovered

## Friday, 7/20









# THE RESPONSE

The DUMCA's swift response to this everyday disaster proved successful because of our

- quick cleanup actions
- DUL Conservation's expertise
- clearly established roles and channels of communication



# Week 1: Day 1

## Friday, 7/20



Water in the storage room



Pooled water in the storage room along shared wall with Stacks 1





# Water in the storage room





# Water in Stacks 1





# Water in the warehouse next door





# Water in the hallway and processing room



# Week 1: Day 1

## Friday, 7/20

Archives closed until further notice

Due to a water issue, the Medical Center Archives office on Christian Avenue is closed until further notice. If you need assistance, please call 919.660.1144





**Week 1: Days 2-7**

**Saturday, 7/21 to  
Thursday, 7/26**



# Weeks 2-3: Days 8-21

## Friday, 7/27 to Thursday, 8/9



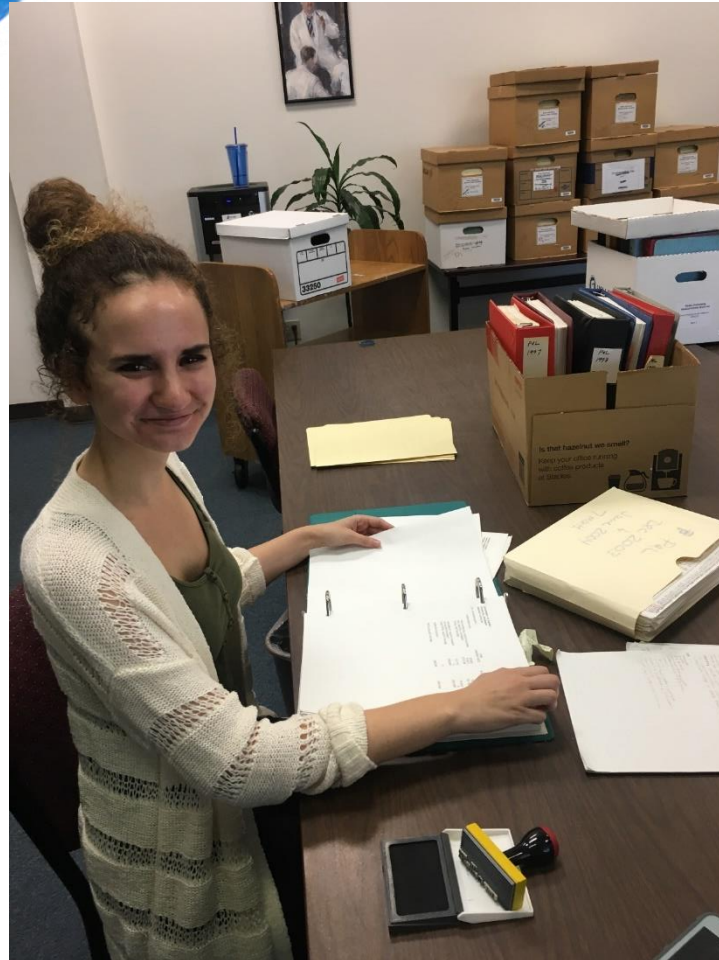
Replaced compact shelving subflooring in Stacks 1





# Weeks 4 & 5: Days 22-41

## Friday, 8/10 to Wednesday, 8/29







# **OUTCOMES & LESSONS LEARNED**



# Outcomes

No collection materials were affected because everything is stored off the floor.

A small amount of supplies were lost: 24 tubes, 12 large map folders, and 50 small map folders

- Total Supply Cost: \$1,115.90

Since our supply shelves and cabinets had to be emptied, it gave us an opportunity to re-envision how to organize our supplies more efficiently.



# Lessons Learned

Made Archives staff more aware of our building  
and how to maintain our space

Document! Document! Document!

Communicate! Communicate! Communicate!





**On to our next adventure...**

<https://archives.mc.duke.edu/>  
lucy.waldrop AT duke.edu  
rebecca.j.williams AT duke.edu