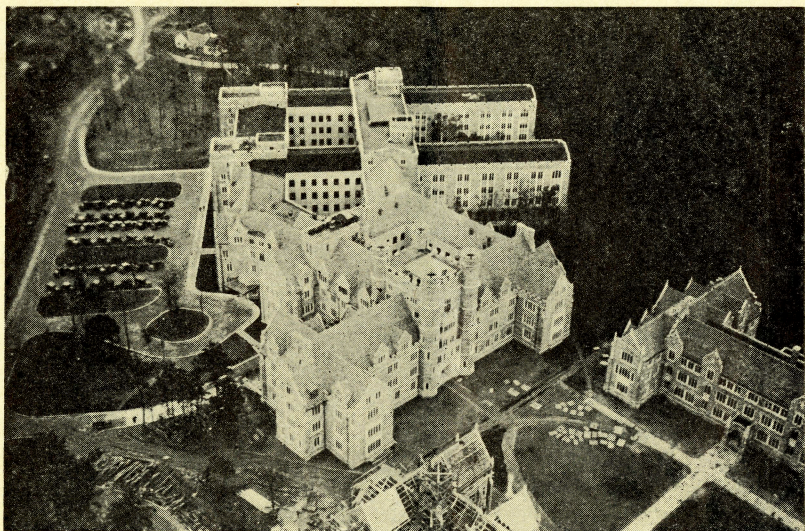


# Duke Hospital

DUKE UNIVERSITY CAMPUS  
DURHAM, N. C.



## A BRIEF HISTORY OF DUKE HOSPITAL

Duke Hospital and its Public Dispensary were opened for patients on July 21, 1930. 78,500 different patients have been examined, diagnosed, and treated, 508,500 patient days of service have been given, 21,400 operations were performed, and over 485,000 laboratory examinations made in the first six and one-half years. It has a daily capacity of 456 bed patients, and 400 ambulatory, or able-to-walk, patients in its various clinics.

The Hospital buildings, plus an endowment sufficient to pay a portion of the operating expenses, were given by the late James B. Duke. The buildings are constructed of native stone quarried at Hillsboro; the trimming is white Indiana limestone. Every effort is made to develop and provide the best possible equipment for the diagnosis, proper care, welfare and comfort of the patients. No money is spent upon non-essential luxuries, however, and no attempt has been made to make this a "luxury hospital."

*(Continued on page 4)*

# THE SERVICES OF DUKE HOSPITAL

## PUBLIC DISPENSARY

**Rates**—Only indigent (poor) patients may be examined, diagnosed, or treated in this division. The charges vary from 25c to \$5.00, plus actual cost of X-rays and other materials used. Patients are required to give satisfactory evidence that they are objects of charity or semi-charity before being admitted to this division.

**Schedule of Public Dispensary Clinics**—NO CLINICS ARE HELD ON SATURDAYS, SUNDAYS, OR HOLIDAYS. PATIENTS MUST REGISTER AT THE TIMES LISTED.

Registration hours: White patients, 12:15 noon, and colored patients at 1:00 p.m., unless otherwise noted below.

General Medicine	}	Daily on <i>Monday, Tuesday, Wednesday, Thursday and Friday.</i>
General Surgery		
Obstetrics and Gynecology (Women's Diseases)		
Children's Diseases		
Ear, Nose and Throat		
Dentistry		
Tumors		
Bone and Joint Diseases:		<i>Monday, Wednesday and Friday.</i>
Urinary and Kidney Diseases:		<i>Tuesday and Friday.</i>
Eye:		<i>Tuesday, Thursday and Friday.</i>
Syphilis:		<i>Thursday at 6:00 p.m.</i>
Asthma and Hay Fever	}	<i>Tuesday at 9:00 a.m.</i> (Patients seen by previous appointment only)
Diabetes		
Infant Feeding		
Pneumothorax (chest and tubercular):		<i>Friday at 9:00 a.m.</i> (Patients seen by previous appointment only)
Endocrine (sterility, menstrual disorders, etc.):		<i>Wednesday 8:30-12:00 a.m.</i> (Patients seen by previous appointment only)

## PRIVATE CLINICS

**Rates**—Upon application. Every effort is made by the hospital staff to supply full medical diagnosis and treatment within the means of all who apply, whether pauper or rich man. The rates in this division vary with the amount of work to be done and the circumstances of the patient. A letter addressed to the Superintendent of the Hospital explaining your complaint and circumstances will be forwarded to the proper private physician or consultant.

**Schedule of Private Clinics**—NO CLINICS ARE HELD ON SATURDAYS, OR HOLIDAYS EXCEPT BY SPECIAL APPOINTMENT.

All services—Hours: *From 8:30 a.m. to 5:00 p.m., daily.*

## HOSPITAL ADMISSION

**Charity**—All charity (part of cost paid by his county, city, church or welfare association), and semi-charity (part of cost paid by patient or his family) patients must be examined in the Public Dispensary before the question of admission to the hospital will be decided. Often all beds are filled—Have your family physician or welfare officer write, wire, or phone the Assistant Superintendent in Charge of Admissions, Duke Hospital, Durham, N. C. for appointment or reservation.

**Private**—Private and semi-private patients should make their reservations in advance by communicating with the Assistant Superintendent in Charge of Admissions or the member of the staff to whom the patient is referred.

**Rates of the Hospital**—The following rates include the usual extra charges (Operating room, X-rays, Drugs, Dressings, Laboratory fees, Special tests and procedures, etc.). *No one may be admitted without paying cash in advance or presenting a guarantee from a responsible financial, business or welfare organization. Any unused portion will be refunded.*

**CHARITY**—\$21.00 first week, \$14.00 per week thereafter—Refund of \$2.00 per day for every day less than a full week (must be paid by city, county, religious or welfare organization.)

**SEMI-CHARITY**—\$28.00 to \$49.00 first week, \$21.00 to \$42.00 per week thereafter—Refund of \$3.00 to \$6.00 for every day less than a full week.

**SEMI-PRIVATE**—\$31.50 to \$52.00 first week, \$24.50 to \$42.00 per week thereafter—Refund of \$3.50 to \$6.00 for every day less than a full week. *Doctors fees in addition.*

**PRIVATE**—\$52.00 to \$115.00 first week, \$42.00 to \$105 per week thereafter—Refund of \$6.00 to \$15.00 for every day less than a full week. *Doctors fees in addition.*

## VISITING HOURS

For the best interests of yourself and your fellow-patients visiting hours must be observed by your relatives and friends. The hours for visiting in the various Wards are as follows:

*Howland* (children) : From 1:00 to 2:00 p.m., daily and Sunday.

*Welch, Osler, Halstead, McDowell, Strudwick, Long* : From 1:00 to 2:00 p.m., and from 6:30 to 7:30 p.m., daily; from 2:00 to 4:00 p.m., and from 6:30 to 7:30 p.m., Sunday.

*Cabell, Campbell, Drake* : From 10:00 a.m. to 12:00 noon, from 2:00 to 5:00 p.m., and 7:00 to 9:00 p.m., daily and Sunday.

*Nott, Prevost* : From 3:00 to 4:00 p.m. and from 6:30 to 7:30 p.m., daily and Sunday.

## A BRIEF HISTORY OF DUKE HOSPITAL

*(Continued from page 1)*

The Hospital applies all funds received from its endowment, and from the Duke Endowment, in assisting patients to secure a quality of treatment which usually is far more expensive than they can afford. In the first six and one-half years the Hospital and Public Dispensary spent from these sources \$1,645,000.00 more than it received from patients. This amount represents the difference between the amounts charged the patients and the actual cost of caring for them. Since April 20, 1933, every patient has been required to pay, or have paid for him by some charitable or governmental agency, at least a portion of the cost of his care—yet the balance of the amount given to the people of North Carolina by Duke Hospital exceeds one-quarter of a million dollars annually. As fast as donations, endowments, or amounts received from private patients increase, more of the destitute patients now on our waiting list will be admitted.

14% of the patients come from within a radius of twenty miles, the remaining 86% come from over 90 of the 100 counties in North Carolina and from 22 other states and Canada. The average distance traveled by the patient is more than seventy miles.

---

### CRITICISMS AND SUGGESTIONS

Your nurse will provide you with a form to be filled out upon your departure upon which all criticisms and suggestions can be made.

If you are having difficulty which should have immediate attention, you will do the Hospital a great service by communicating with the Superintendent.

---

### INSURANCE AGAINST HOSPITAL BILLS

At the present time there are two organizations operating in North Carolina which, for a small premium, will issue certificates protecting employed persons and their wives and children against the payment of hospital bills in any hospital in the United States. These bills, at best, are always a heavy burden. Both of these organizations are mutual and non-profit; and, we believe, are well managed and responsible. If interested, communicate with:

The Hospital Care Association, Trust Building, Durham, N. C.

or

The Hospital Savings Association, Chapel Hill, N. C.