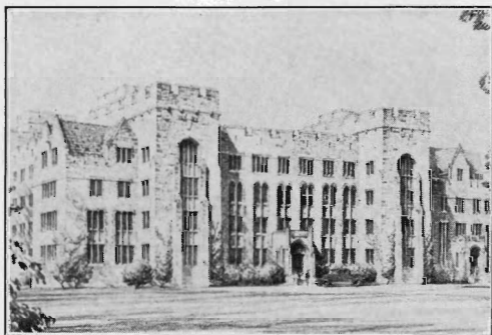


Darwin *W. H. L. L.*
30000

DUKE HOSPITAL

DURHAM, N. C.



WARD PATIENTS

Duke University cannot give charity treatment to all who apply, therefore patients whose incomes are less than \$15 per week should apply, through their family physicians, to the Duke Public Dispensary (tel. Durham F-132). Appointments at the Duke Public Dispensary are made for white patients at 1 p.m. and for colored at 3 p.m. in the various specialties on the days listed below. The charge for examinations in the Duke Public Dispensary is \$2, exclusive of X-rays and special tests.

Admission of patients to the hospital wards, whether full pay, part pay or free, cannot be made until after an examination

in the Duke Public Dispensary on the days and hours listed below. The ward rate is \$3 per day. Welfare departments and churches should assist in the payment for the needy.

SCHEDULE OF THE DUKE PUBLIC DISPENSARY

White patients at 1 p. m.; colored at 3 p. m.

Medicine: Daily, except Saturdays, Sundays and holidays

General Surgery: Daily, except Saturdays, Sundays and holidays.

Obstetrics and Women's Diseases: Tuesdays and Fridays.

Urology: Tuesdays and Fridays.

Children's Diseases: Mondays and Thursdays.

Ear, Nose and Throat: Mondays and Thursdays.

Dentistry: Mondays and Thursdays.

Eye: Thursdays.

Asthma, Hay Fever and Skin Diseases: Tuesdays.

Syphilology: Wednesdays.

Orthopedics: Mondays and Wednesdays.

PRIVATE PATIENTS

Patients who can pay the private rates of \$5 to \$8 per day may at any time, through their family physicians in consultation with any member of the hospital staff, reserve private rooms by telephoning to the admitting office (Durham F-131). Appointments for private examinations and treatment may be made in advance by telephoning to members of the hospital staff.

Every effort is being made to cooperate with the medical profession, and patients are asked to return to the physicians who referred them to the hospital and public dispensary.