



Duke University Medical Center Library News

December 1998

Issue #261

Evidence-Based Medicine: A Natural Fit For The Library

Evidence-based medicine or EBM combines individual clinical expertise with the best available clinical evidence from systematic research in making decisions about the care of individual patients. Clinical expertise is the proficiency and judgment that individual clinicians acquire through clinical experience and practice. Clinical evidence comes from patient-centered clinical research, which investigates the accuracy and precision of diagnostic tests, the efficacy and safety of therapeutic regimes, and the reliability of prognostic indicators. The powerful combination of clinical expertise and documented evidence results in safer, more efficacious and accurate care of the patient.

Librarians bring to EBM their expertise in understanding the structural design of databases reporting clinical research, and the intellectual process of searching these databases for the best evidence. Using this expertise, librarians can serve as consultants, educators, and expert searchers for evidence-based medicine initiatives. The Library has been involved in a number of projects to support evidence-based medicine at the Medical Center:

- Developed a Web page to support the EBM course taught to Duke Residents at the VA (<http://www.mc.duke.edu/mclibrary/respub/guides/ebm.html>)
- Participates in teaching EBM class sessions which focus on identifying relevant resources and refining search skills
- Participates in the General Medicine Morning Report project which adds a MEDLINE search strategy mentoring component to the Thursday morning meetings
- Maintains a Web page of useful EBM resources on the Internet (<http://www.mc.duke.edu/mclibrary/respub/refres/ebm.html>)
- EBM electronic resources added to our collections:
 - Best Evidence (*ACP Journal Club* and *Evidence-based Medicine*)
 - Cochrane Database of Systematic Reviews
 - EBM Reviews limit function in Ovid MEDLINE
 - MD Consult (electronic textbooks, practice guidelines, and CME)
- EBM filters (developed by McMaster University) made available on the Ovid system. The efficiency of these filters is currently being reviewed.
- Supports research on the effectiveness of teaching EBM concepts on the use of clinical literature
- Provides consultations on search strategies and conducts literature searches for departments under contract with the Agency for Health Care Policy and Research, as part of the Evidence-Based Practice Center.
- Developed a proposal to work with the Department of Surgery on an EBM-related project

Connie Schardt, Education Coordinator

Duke University Medical Center Library Monday - Friday 8:00 am - 12:00 am Saturday 10:00 am - 6:00 pm Sunday 12:00 noon - 12:00 am Administration 660-1150 Circulation 660-1100 Information Desk 660-1111 ILL/Document Delivery 660-1135	<table style="width: 100%; border: none;"> <tr> <td style="width: 50%;">Evidence-Based Medicine..... 1</td> <td style="width: 50%;">From the Suggestion Box..... 5</td> </tr> <tr> <td>Reference Gems..... 2</td> <td>E-Journals Web Page..... 5</td> </tr> <tr> <td>MD Consult..... 3</td> <td>Staff News..... 6</td> </tr> <tr> <td>Internet Insights..... 4</td> <td>Holiday Hours..... 6</td> </tr> <tr> <td>Duke Authors Collection..... 5</td> <td>Library Educational Offerings..... 7</td> </tr> </table>	Evidence-Based Medicine..... 1	From the Suggestion Box..... 5	Reference Gems..... 2	E-Journals Web Page..... 5	MD Consult..... 3	Staff News..... 6	Internet Insights..... 4	Holiday Hours..... 6	Duke Authors Collection..... 5	Library Educational Offerings..... 7
Evidence-Based Medicine..... 1	From the Suggestion Box..... 5										
Reference Gems..... 2	E-Journals Web Page..... 5										
MD Consult..... 3	Staff News..... 6										
Internet Insights..... 4	Holiday Hours..... 6										
Duke Authors Collection..... 5	Library Educational Offerings..... 7										



Reference Gems -- Locating Test Instruments

The most popular publications used to locate psychological assessment tools are *Tests in Print*, *Mental Measurements Yearbook*, and *Tests: A Comprehensive Reference for Assessments in Psychology, Education, and Business*. These three resources are available in Ref. 8 at the Medical Center Library.

Tests in Print (TIP) is a bibliographic encyclopedia of every published test available in psychology, education, and achievement. Entries consist of the test title, purpose, population, scores, administration (individual or group), time, comments, author, and publisher. This work does not contain reviews. Its purpose is to serve as an index to the Buros Institute series on tests. **Use TIP to locate tests other than by test title** (e.g., all tests measuring self-esteem).

Mental Measurements Yearbook (MMY) is an alphabetical list of tests by test title and includes all the descriptive material, test references, and critical reviews. It also includes information on validity, reliability, and scoring. *MMY* contains six indexes to help locate tests for which you have limited information. **Use MMY to obtain detailed test information for titles previously found in TIP.**

Tests: A Comprehensive Reference for Assessments in Psychology, Education, and Business is similar to *TIP* in that it provides the essentials of the test but not the evaluative critiques or data on validity and reliability. Its arrangement is by broad categories (psychology, education, and business). Indexes include sections for out-of-print tests and foreign language availability. **Use Tests for quick access to English language test instruments.**

Directory of Unpublished Experimental Mental Measures supplements the Buros series by providing information on other tests and test instruments not commercially available. Tests are arranged by category according to test function and content. Items include test name, purpose, format, reliability and validity, authors, and references. This resource is updated irregularly and each volume contains a cumulative index. **Use the Directory of Unpublished Experimental Mental Measures to determine what types of non-commercial experimental test instruments are currently in use.** These test instruments, often described in journal articles, are usually available from the researcher who designed the instrument.

To Locate a Particular Type of Test: Start your search in the subject and test title index of *Tests in Print* to help locate several different tests on your topic. You should then review the more detailed entries to determine if the test is useful. Descriptions usually identify age or grade levels for which the test is appropriate.

To Locate a Specific Test: Use the score section of *Mental Measurements Yearbook* to find tests that measure a subarea not found in the title index. Once you have either a title or an author, your chance of actually locating that test greatly improves. If you are still unable to locate your title, it may be because the test is a new item or it may not be commercially available. *Tests in Print* and *Mental Measurements Yearbook* have the largest indexes to tests; all of the above mentioned sources have indexes to test publishers. Tests are usually available for purchase from the test publisher.

In a future issue of *Medical Center Library News*, some additional tools will be reviewed for locating tests. So...stay tuned for Part II.

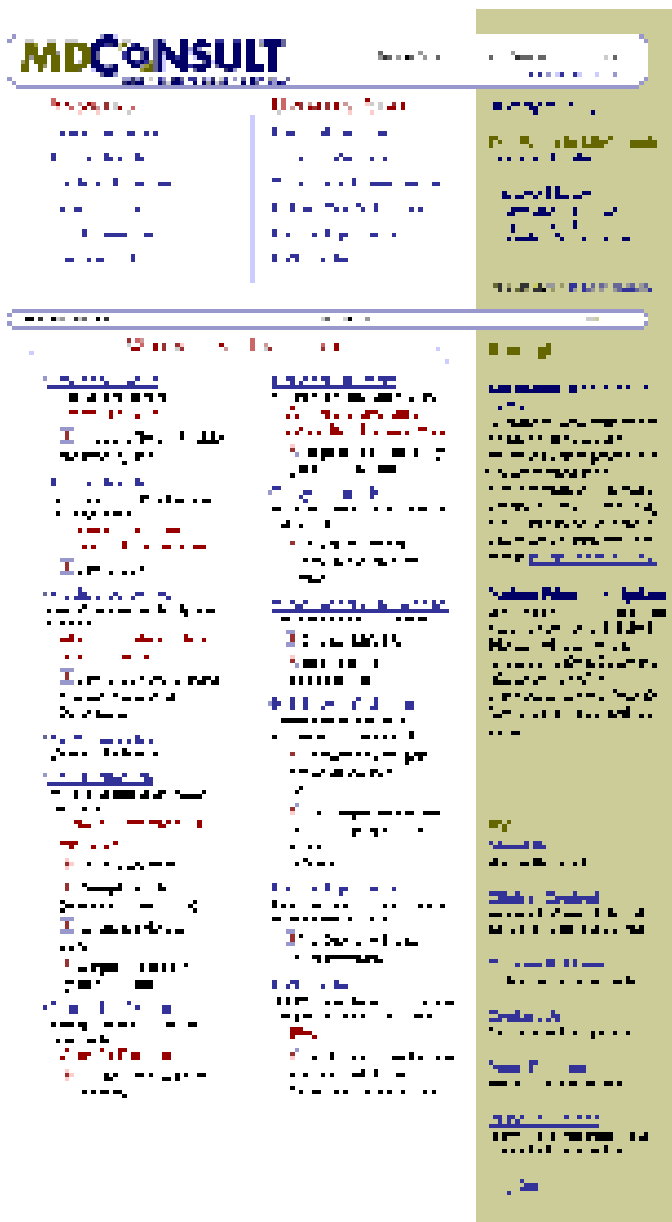
Hattie Vines
Information and Education Services

MEDLINE Now Updated Weekly

To keep you more up-to-date, the content of Ovid MEDLINE is now up to three weeks more current than in the past. AutoAlert searches (SDI's) saved in MEDLINE will now be sent via email on a weekly basis, instead of monthly.

EndNote, a popular and high quality bibliographic manager, has a number of users in the Medical Center. The Library has begun offering tutoring sessions on the basics of using EndNote, including downloading and uploading citations from MEDLINE using the Ovid Web Gateway and incorporating them into a manuscript. The sessions are by appointment only and last an hour and a half. Prerequisites are some familiarity with a Windows-based word processor (preferably Word) and Netscape. Call **Andrew Eisan** at **660-1128** to set up an appointment for a session.

MD Consult...Our Latest Online Clinical Tool



MD Consult provides access to 37 medical texts, over 500 peer-reviewed clinical practice guidelines, and full texts from articles in 47 medical journals, including the *Clinics of North America* series and the *American Journal of Emergency Medicine*. In addition, MD Consult provides an update service, summarizing articles in recent medical journals and highlighting articles that patients may be reading in the popular press.

You can access MD Consult from the Library's main Web page under **Clinical Tools** (<http://www.mc.duke.edu/mclibrary/respub/collections/clintool.html>). The first time you login, you are required to register with MD Consult. To register, click on "**Sign Up NOW!**" and follow the instructions on-screen.

As a registered user, MD Consult will save your last search strategy, provide you with a "personal summary" link to information in your area of interest, and save any information you add to patient education materials.

Once you have registered, you can simply click "**Member Sign-In**" to login in the future.

If you already have a personal account for MD Consult and would like to begin accessing it through the Medical Center Library's Website, you can email MD Consult's customer service department (customer.service@mdconsult.com). Upon receiving your request, they will transfer your user name and password to our account, as well as send you a pro-rated refund for any of your unused subscription.

To access MD Consult, you must login from a Duke IP address and use a frames-capable Internet browser that will accept cookies. If you have trouble accessing the service, or have any questions, please call the Information Desk at 660-1111.

Julie Garrison
Head, Electronic Resource Services

Internet Insights

Evidence-Based Medicine (EBM) Sites

Evidence Based Practice Newsletter (Michigan State)

<http://jfp.msu.edu/ebp.htm>

Source of information for the evidence-based practice of medicine from the publishers of the *Journal of Family Practice*. It features POEMs (Patient Oriented Evidence that Matters), articles about the kinds of problems seen in primary care that use outcomes patients care about and that have the potential to change practices.

Evidence Based Medicine Course from Suny Health Sciences

<http://courses.hscbklyn.edu/ebm/ebmtoc.htm>

Web-based tutorial introducing EBM principles and strategies in searching and evaluating the literature.

McMaster Evidence Based Med Homepage

<http://hiru.hirunet.mcmaster.ca/ebm/>

McMaster University's excellent Internet site on EBM. Includes everything from a General Overview to an EBM onLine Discussion Group.

Oxford University's Centre for Evidence-Based Medicine

<http://cebm.jr2.ox.ac.uk/>

A good resource for information from Oxford University promoting EBM.

American College of Physicians Evidence-Based Medicine Journal

<http://www.acponline.org/journals/ebm/pastiss.htm>

This Website for the *Evidence-Based Medicine Journal* from the American College of Physicians includes selected articles from current and past issues.

Bandolier - Evidence Based Health Care

<http://www.jr2.ox.ac.uk/Bandolier/index.html>

Bandolier, now in its fourth year, was started as an experiment in the former Oxford Region. The idea was to give a mixed group of readers information on those things which were known to be effective, and those which were not. It set out to present information from systematic reviews, meta-analyses, and randomised trials.

Netting the Evidence - A SchARR Introduction to Evidence Based Practice on the Internet

<http://www.shef.ac.uk/uni/academic/R-Z/scharr/ir/netting.html>

This is a comprehensive list of Internet resources for EBM. The School of Health and Related Research (SchARR,

pronounced shah) was formed in 1994 to act as a focus for health services research/health technology assessment within the University of Sheffield. SchARR harnesses the strengths of a number of methodological teams with expertise in health services management, health services research, health economics, information science, operational research, and statistics. It conducts research in a broad variety of clinical settings including general practice, nursing, ageing, rehabilitation and mental health, together with public health.

Turning Research into Practice (TRIP)

<http://www.gwent.nhs.gov.uk/trip/test-search.html>

The TRIP database provides a single searchable index to 14 EBM resources, thus providing a one-stop link to over 1150 evidence-based topics. Sources indexed by TRIP include the Cochrane Database, the Canadian Clinical Practice Guidelines Infobase, and the evidence-based healthcare journal *Bandolier*.

For more sites, see our EBM Web page at <http://www.mc.duke.edu/mclibrary/respub/refres/ebm.html>.

In addition to the Internet sites listed above, the following new **EBM databases** are available via Ovid:

Best Evidence (1991-) The editors of Best Evidence screen the top clinical journals on a regular basis and identify studies that are both methodologically sound and clinically relevant. Enhanced abstracts of the chosen articles are then written, providing commentaries on the value of the studies for clinical practice. These abstracts are published in *ACP Journal Club* and *Evidence-based Medicine*.

Cochrane Database of Systematic Reviews (1991-)

Cochrane authors review hundreds of studies, select those that meet strict EBM criteria, perform "meta-analyses" when possible on all the included studies, and write detailed and structured reviews of the topics and findings.

The MEDLINE limit, **EBM Reviews**, immediately allows you to identify articles in MEDLINE that have met strict quality criteria and have associated evidence-based article reviews or topic reviews. EBM Reviews will limit your retrieval to MEDLINE articles which are reviewed in *ACP Journal Club* or *Evidence-based Medicine* or appear in the "included studies" list of Cochrane reviews or protocols.

Connie Schardt, Education Coordinator
Information and Education Services

Duke Authors Collection on Exhibit

To acquaint the community with the scope of publication within the Medical Center, an exhibit of the Duke Authors Collection, drawn from volumes added to the Library's collection, is now on display in the Lower Lobby of the Library. This exhibit will be available for viewing until the end of December, 1998.

The Medical Center Library staff welcomes your suggestions and comments. Please feel free to drop them in the Suggestion Box located on the Entrance Level across from the Circulation Desk.



From the Suggestion Box

Question: *The names for the Library floors (first stack level, etc.) are very confusing. Why can't you use second floor, third floor, etc.?*

This is not the first time we have received this question. Both new patrons and staff find it confusing! The Library has looked into the possibility of changing the names of the floors, but this is not as easy as it seems. There are dozens of plans throughout the Medical Center which refer to our building and the current way we name our floors. If we did change our floor names, we would have to make sure ALL of these documents, from dozens of blueprints to fire/safety plans, were all changed at the same time. However, we have not abandoned the idea entirely, and as we go through renovations in the future, we may change what our various floors are called.

Question: *Would it be possible to put a note on the current journal shelves when there is a second copy in the stacks? I spent a lot of time looking for a current issue and found both copies upstairs!*

Thanks for this great suggestion! As a result, labels have now been placed on the current journal shelves indicating when there is a second copy kept in the stacks with the bound volumes. When the Library receives second copies of some of the major medical journals, such as *Lancet* and the *New England Journal of Medicine*, one copy is kept in the current journal area and the other copy is shelved in the stacks. The labels will let our patrons know if there is a second copy and that it can be found in the stacks with the bound journals.

E-Journals Web Page

Many biomedical journals now have Websites. Some contain only tables of contents and abstracts, but an increasing number are available full text, usually with articles from the last year or two. The Library's Website has an alphabetical list of full text titles accessible to the Duke community. Click on the **E-Journals bar** in the upper right corner of the main page, or select **E-Journal Collection** from the drop down menu under Resources & Publications. You may also access it directly by going to <http://www.mc.duke.edu/mclibrary/respub/collections/ejrn.html>.

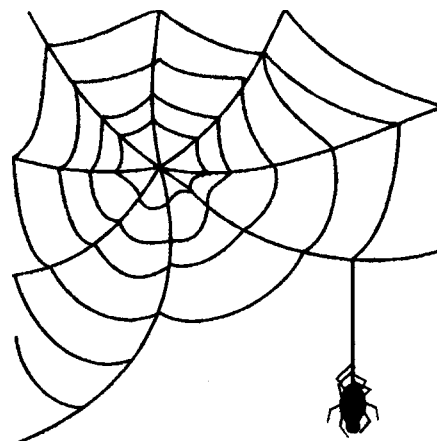
Titles marked with the Ovid logo are interactively linked to Ovid Technologies' MEDLINE database. The system retrieves all of the indexed articles for the selected journal as Search #1, which can then be combined or limited to narrow the search to items of interest. The non-Ovid titles link directly to their publishers and are generally more up-to-date. Although they include some material in addition to articles, they lack Ovid's cross references to MEDLINE. At the end of the Web page are some links to additional e-journal resources.

Like the Web itself, this is a rapidly expanding area, so be sure to check this page every few weeks to see if some of your favorites have come up.

Judy Woodburn
Serials & Special Projects Librarian

Journals@Ovid (full text) Now Available!

Visit
the
Medical
Center
Library
on the
Internet at:



<http://www.mc.duke.edu/mclibrary>

Staff News



Honors

Beverly Murphy, Head of Marketing and Publications, was honored by her colleagues twice in October. The National Library of Medicine named her as one of their most wanted librarians in recognition of National Medical Librarians Month. Her wanted poster is mounted on the NLM Website at <http://www.nlm.nih.gov/lo/profiles98/murphy.html>.

Beverly also received the “Marguerite Abel Service Recognition Award” for her many contributions to the Mid-Atlantic Chapter (MAC) of the Medical Library Association. She is currently the Treasurer of MAC, has filled the position of Newsletter editor for several years, and has served on many of the Chapter's committees. She was nominated and recognized by MAC members for this honor. The award was presented at the MAC Annual Meeting in Pittsburgh, PA.

Presentations

The Medical Center Library was well represented at the Poster Sessions during the **Mid-Atlantic Chapter of the Medical Library Association Annual Meeting** in Pittsburgh, October 4-7, 1998.

Beverly Murphy, Julie VanDyke Garrison, and Derrick Vines presented a poster on the printing system which the Library installed last year. The poster, entitled “When It's Not Free Anymore: Promoting the Unpopular,” has generated a lot of interest among librarians who are trying to control printing costs.

Connie Schardt, Anne Powers, and Eric Albright developed the poster, “The Teachable Moment: EBM@morning.report,” which described their involvement in teaching evidence-based medicine to residents.

Eric Albright and Pat Thibodeau had a poster accepted which described the Duke-ECU Partnerships in Training Program. The poster, “Partners for Distance Learning,” explained how library services were being provided to students in remote locations. The poster was submitted in conjunction with librarians from ECU and Southern Regional AHEC.

Publications

Scott Garrison, Head of System Interface Services, is the author of the recent article, “Evaluating Health Internet Sites: A White Paper's Criteria,” published in *Medical Reference Services Quarterly*, 17 (3) Fall, 1998.

Eric Albright, Head of Public Services, has a journal review appearing in the recent issue of *JAMA*, which he co-authored with Dr. Steve Eubanks, Director, Surgical Endoscopy. The review of the journal *Gastrointestinal Surgery* appeared in *JAMA*, 280 (13):1200. Eric has developed expertise in journal reviews, and this is one of many he has written for *JAMA*.

Connie Schardt, Education Coordinator, published an article in the recent issue of the *Bulletin of the Medical Library Association* (v. 86, no. 4, Oct.) entitled “Going Beyond Information Management: Using the *Comprehensive Accreditation Manual for Hospitals* to Promote Knowledge-based Information Services.”

Staff Changes

Hafsa Murad, a familiar face at the Circulation and Information Desks for many years, has accepted a position with Dialog, which provides online database services to users worldwide. Dialog is relocating its headquarters from California to Cary. Hafsa, who recently received her Masters degree in Library Science, has been hired to work in their health division. The Medical Center Library wishes her success in her new professional position.

The Library welcomes **Jeffrey Pritcher** to Circulation Services. He will be working at the Circulation Desk in the evenings and on Sundays. Before coming to Duke, Jeffrey worked in local bookstores. He has also earned a Bachelors degree in Psychology and a Masters degree in Divinity.

Iris Gale, Administration

Holiday Hours

Sunday	Dec. 20	12:00 pm - 12:00 am
Monday	Dec. 21	8:00 am - 12:00 am
Tuesday	Dec. 22	8:00 am - 8:00 pm
Wednesday	Dec. 23	8:00 am - 8:00 pm
Thursday	Dec. 24	8:00 am - 5:00 pm
Friday	Dec. 25	CLOSED
Saturday	Dec. 26	CLOSED
Sunday	Dec. 27	12:00 pm - 8:00 pm
Monday	Dec. 28	8:00 am - 8:00 pm
Tuesday	Dec. 29	8:00 am - 8:00 pm
Wednesday	Dec. 30	8:00 am - 8:00 pm
Thursday	Dec. 31	8:00 am - 5:00 pm
Friday	Jan. 1	CLOSED
Saturday	Jan. 2	10:00 am - 6:00 pm
Sunday	Jan. 3	12:00 pm - 8:00 pm
Monday	Jan. 4	8:00 am - 12:00 am



Library Educational Offerings



The following classes will be held in the Medical Library Education Center (MLEC), Room 104 on the Lower Level of the Library.

Database Classes

OVID MEDLINE SYSTEM
(Registration not required)

Ovid Part I: Basics Using Telnet

Participants are not expected to have used Ovid

11:00 am - 12:30 pm
Tuesday, December 1

Ovid Part I: Basics Using Web Gateway

Participants are not expected to have used Ovid but should be familiar with the Internet and Netscape

1:00 pm - 2:30 pm
Thursday, December 10

Ovid Part II: Advanced Strategies

Participants are expected to have experience using Ovid

11:00 am - 12:30 pm
Tuesday, December 15
3:00 pm - 4:30 pm
Thursday, December 17

GRANT INFORMATION ON THE WEB

~ **SPIN Database** ~
9:00 am - 10:30 am
Tuesday, December 1

INTRODUCTION TO REFERENCE MANAGER/ENDNOTE

(By Appointment Only)

Call Andy Eisan
660-1128

Internet Classes

Registration is required. Sign-ups will be accepted by phone at 660-1124, via email sent to Connie Schardt, Education Coordinator, at schar005@mc.duke.edu, or via the Web at <http://www.mc.duke.edu/mclibrary/services/regform.html>.

Introduction to the World Wide Web Using Netscape

10:00 am - 12:00 pm
Wednesday, December 2

Searching and Evaluating Information on the World Wide Web

10:00 am - 12:30 pm
Thursday, December 10

Managing Bookmarks



1:00 pm - 2:00 pm
Wednesday, December 9

Other Classes

BASICS OF LIBRARY USE

(By Appointment Only)

Call Betsy Adams
660-1131

 *Registration is not required for the Database Classes* 

For the most current class schedule, connect to the Library's Website at <http://www.mc.duke.edu/mclibrary/services/schedule.html>.

Duke University Medical Center Library News is published bimonthly.
Susan Feinglos, Director *Beverly Murphy, Editor*

Editorial Board:

Mary Ann Brown *Maurice Reece*
Iris Gale *Pat Thibodeau*
Julie Garrison

To subscribe to *Medical Center Library News* or to receive notification by email when the Web version is available, please complete the information below and return this sheet to the **Medical Center Library, Box 3702, DUMC**. You may also send email to mclnews@mc.duke.edu, or complete the Mailing List Form at <http://www.mc.duke.edu/mclibrary/about/news/mailform.html>.

Name _____

Department _____

Box Number _____

Email Address _____

(Must include if email notification is being requested)

Email notification only? Yes _____ No _____

Paper copy only? Yes _____ No _____

Both? Yes _____ No _____

DUKE UNIVERSITY MEDICAL CENTER
BOX 3702 MEDICAL CENTER LIBRARY
DURHAM, NORTH CAROLINA 27710

First Class