

DUKE UNIVERSITY MEDICAL CENTER LIBRARY

NEWSLETTER #255

SEPTEMBER 1997

FROM THE DIRECTOR

WELCOME NEW AND RETURNING LIBRARY USERS

Duke University Medical Center Library is pleased to offer state-of-the-art technology; tailored educational programs; networked resources; an excellent collection of print and electronic resources; unique History of Medicine collections; well-trained, customer service-oriented library staff; and access to information when and where you need it.

This issue of the *Newsletter* includes a "General Information Guide" which provides basic information about hours of operation, our Website address (<http://www.mc.duke.edu/mclibrary>), borrowing policies, fines, document delivery services, etc.

Please do not hesitate to contact me or our staff with any questions or comments.

Susan Feinglos

660-1150; 681-7599 (fax)
feing001@mc.duke.edu

IN THIS ISSUE

From the Director.....	1
Free MEDLINE Access: Why Pay?.....	1
MCL General Information.....	3
New Borrowing Policies.....	4
Accessing the Ovid Databases.....	5
Database Update.....	5
Major Overhaul in Ovid Classes.....	6
SDI Services.....	7
Like to Recommend a Book?.....	7
Net.work/Internet Insights.....	8
Full Text Journals/Phone Numbers.....	9
Scheduling the Classroom.....	10
Surveys: New and Old.....	11
History of Medicine.....	11
Spotlighted Software.....	12
Staff News.....	12
Library Survey.....	13
Library Educational Offerings.....	15

W
E
L
C
O
M
E
I
S
S
U
E

FREE MEDLINE ACCESS: WHY PAY?

In June 1997, the National Library of Medicine (NLM) announced that they would be offering free, Web-based access to the MEDLINE database via PubMed and Internet Grateful Med. Considering the vast availability of free searching at these and other commercial sites, why would anyone want to pay for MEDLINE access anymore? In attempting to answer this question, another one must be posed - what kind of information do users receive from these free sites?

Our decision to continue to pay for the Ovid version of MEDLINE has been based not only on costs, but on a desire to have access to the best search engine and a fast and reliable system to run it. Because search engines are different, with varying degrees of sophistication, the following factors were used in our evaluation of the free systems:

Access - As with all Web-based sites, access and speed will change according to the time of day and the amount of traffic on the Internet. At any given time, vendors' equipment may not be able to accommodate a high volume of simultaneous searching.

Coverage - The number of years covered varies among the systems, and often, it is not clear what the start and end dates are. However, many of the systems provide full access (1966+).

Currency - Many systems fail to regularly update the files, so currency can be very different among the systems.

Flexibility - Most systems do not easily lend themselves to comprehensive, complex searching, which is particularly important to researchers. Many versions of free MEDLINE are better suited for "quick and dirty" searching for a few citations.

Searching Method - Most systems provide Boolean, fuzzy logic, or natural language capabilities, but the specifics of how the methods work will depend upon the system.

Capabilities/Features - Capabilities vary from basic features to the more advanced. Some systems allow only textword searching (words in titles and/or abstracts). Many do not permit mapping of keywords to *Medical Subject Headings (MeSH)* or offer the explode capability. Others have no thesaurus or index. Several have minimal searchable fields or limit capabilities. Most do not offer access to full text (although some do for a fee).

Continued on next page

Free MEDLINE Access...continued

Retrieval Functions - Most systems have no citation managers to help you print and save citations. The systems also differ in terms of how many references can be recalled or viewed. Some limit to a certain maximum amount and only permit viewing of references one at a time. Support of other functions like email or downloading may be different or depend on browser capabilities.

Local Holdings Display - None of the free systems have the capability of indicating which journals are owned by the local medical library.

Reliability of Results - Because of the differences in the systems, it's often difficult to determine the validity of search results. MEDLINE users may assume that they have produced a comprehensive search when they have not.

Integrity - NLM tries to insure the integrity and quality of MEDLINE data through its vendor licenses. However, once released to the commercial vendors, there is no assurance that the data will be maintained. Systems may not update the database or load the new subject headings as soon as they receive them.

Security - Information on your email address, computer system, and search topics may be collected by these free sites for marketing purposes. Some sites are using distracting ads to compete for the attention of the user, since Web ad revenues are often used to cover NLM leasing costs.

Help - Usually very little if any user support is available beyond the online help screens. Some help may only be related to the specific search engine and not to the intricacies of the MEDLINE database.

Costs - Although none of these systems charge to search, there may be charges to print, via credit card charge. Also, it is not assured that what is free now will always be free.

The National Library of Medicine's free MEDLINE service has been instituted in an attempt to "provide health information to the public." However, our purpose in providing MEDLINE access is to support the University's clinical, research, and educational mission, which is not limited by the boundaries of consumer health.

The Medical Center Library tested six of the most popular free MEDLINE sites, by performing an expert and novice level search on two separate questions and comparing the results. While performing the searches, we noted the number of results and range of options available to the searcher. We concluded that the Ovid search interface is still significantly better than the free sites; however, access via Internet Grateful Med (<http://igm.nlm.nih.gov>) seemed to offer the most current results. (For more information regarding this

study, contact Eric Albright, Head, Information and Education Services, at albri008@mc.duke.edu.) Currently, there are many ways to access free MEDLINE, but none can replace the Ovid MEDLINE system which is available through our Library.

The Ovid search engine is an excellent interface to MEDLINE and other databases. It uses state-of-the-art software designed to fully exploit the MEDLINE database structure and indexing, which assures the delivery of reliable search results. Using the Ovid interface to MEDLINE allows us to link directly to a full text journal collection, while providing a single interface to a number of other databases. The learning curve for searching the Library's other databases is thereby reduced, since Ovid uses the same searching interface for all the databases.

In terms of features and functionality, Ovid is better in every respect compared to the free sites. It also offers the ability to display local holdings, which is not possible at any of the free sites. It can accommodate the novice searcher as well as the advanced expert, and with the advent of the Ovid Web Gateway, the searching interface is as simple as it is powerful. The Web version allows you to combine prior searches, save search strategies and re-execute them later, and save citations to later print, email, display or download.

The Medical Center Library has always strived for excellence, and we believe that the Ovid system provides the best access to the medical and health information which our users require. Our goal is to provide our patrons with the information that they need, when and where they need it. We are confident that the Ovid search interface, which is already incorporated into the DUMC's information infrastructure, is worth the cost.

References

1. Detmer, W.M. Medline on the Web: Ten Questions to Ask When Evaluating a Web Based Service. (<http://www.med.virginia.edu/~wmd4n/medline.html>)
2. Dr. Felix's Free MEDLINE Page. (<http://www.beaker.iupui.edu/dfelix>)
3. Engstrom, P. MEDLINE Free-For-All Spurs Questions About Search Value, Who Pays. *Medicine on the Net* 2(8): 1-5, August 1996.
4. Free MEDLINE on the Web: A Practical View. *Cyberpulse* (2), Spring 1997. (http://www.imr.on.ca/cyberpulse/no_2.htm)
5. Internet Medline Comparison Table at Medical Matrix. (<http://www.medmatrix.org/info/medlinetable.asp>)
6. New Web Sites in the Health Sciences: MEDLINE. *MLA News* (294):12, March 1997.
7. What's the deal with all this FREE MEDLINE? *American Medical News* (Internet edition), NETWORKING: March 17, 1997. (http://www.ama-assn.org/sci-pubs/amnews/net_97/nwkg0317.htm)

Beverly Murphy, Head, Marketing and Publications

MEDICAL CENTER LIBRARY GENERAL INFORMATION

Hours of Operation

Monday - Friday 8:00 am - 12:00 midnight
Saturday 10:00 am - 6:00 pm
Sunday 12:00 noon - 12:00 midnight

• History of Medicine Collections

Monday - Friday 8:00 am - 5:00 pm
Evening hours as announced.

• Information & Education Services (during semesters)

Monday - Thurs. 8:00 am - 8:00 pm
Friday 8:00 am - 5:00 pm
Sunday 1:00 pm - 5:00 pm

Website: <http://www.mc.duke.edu/mclibrary>

Circulation Services 660-1100

• Borrowing Policies

Books — 4 weeks with one renewal. *History* — 2 weeks.
Audiovisuals — 1 week with two renewals.
Unbound journals — 2 hours. No renewals.
Bound journals — 1 day. No renewals.

*Holds may be placed on materials which are signed out.
Materials signed out may be recalled after two weeks.*

• Fines

Books and Audiovisuals — 50 cents a day.
Journals — \$1.00 per hour. No grace period.
Reserves or noncirculating items — 50 cents per hour.
No grace period.
*There is a three-day grace period for books and audio-
visuals. If not returned within the grace period, fines
accrue from the due date. Failure to return materials
or pay fees may result in suspension of privileges.*

• TRLN Borrower's Card

Permits borrowing of books at UNC, NCCU and NCSU.
Available at the Library's Circulation Desk.

• Campus-wide Borrower's Card

For library users not currently affiliated with the Univer-
sity. \$100 annual fee. Available at the Library's
Circulation Desk. Various restrictions may apply.

Interlibrary Loan/Photocopy Services 660-1135

• A-to-Z Information Express - Fee-based, in-house photocopying and/or document delivery for DUMC faculty, staff, and students.

Books/Audiovisuals	Free
Photocopies per article	
Up to 30 pages	\$3.00*
Over 30 pages	10 cents per page

Additional fees

Fax	\$3.00 per request
Rush	\$3.00 per request

* *Interlibrary loan fees over \$12.00 per article will also be
billed to the patron.*

*Requests may be submitted in person or via the Website
at [http://www.mc.duke.edu/mclibrary/ref/forms/dumc/
atozform.html](http://www.mc.duke.edu/mclibrary/ref/forms/dumc/atozform.html)*

Self-service Photocopiers/Printer Workstations

- Duke faculty, staff, and students - 6 cents per copy
- Non-Duke users/Commercial vendors - 11 cents per copy
- *Free printing at search stations in the Reference Area.*

Information & Education Services 660-1111

• Mediated Online Search Requests (performed by Library staff)

Ovid Databases

Duke-affiliated personnel - \$20 minimum (25 free refs.)
Additional references are charged at the rate of 15 cents
per citation (without abstract) or 20 cents per citation
(with abstract).

Non-Duke personnel - \$30 minimum (25 free refs.)
Additional references are charged at the same rate as
above.

Duke/non-Duke students - \$10 minimum (25 free refs.)
Additional references are charged at the same rate as
above.

Other Databases

NLM Databases: Minimum charge (as stated above)
and online costs plus 10% service charge

Non-NLM Databases: Minimum charge (as stated
above) and online costs plus 15% service charge

Faxing Fees

Local phone numbers - \$5.00

Long distance phone numbers - \$8.00

Maximum number of pages: 25

*Search requests may be submitted in person, by phone,
or via the Website at [http://www.mc.duke.edu/mclibrary/
ref/forms/srchform.html](http://www.mc.duke.edu/mclibrary/ref/forms/srchform.html)*

- **Regular Tours and Orientations** - Call 660-1111 for
more information.

Database Access

- **DRA Online Catalog** - Electronic catalog of collections
at Duke, NC State University, UNC-Chapel Hill, and
North Carolina Central University.

Web access: http://www.lib.duke.edu/online_catalog.html

Telnet address: ducatalog.lib.duke.edu or 152.3.100.60

Username=>library

Modem: 681-4900; Full Duplex; No Parity; Databits 8;
Stopbits 1.

*The Online Catalog menu lists other databases provided
by main campus.*

- **Innovacq (Current Journals)** - Information on current
journal subscriptions and issues. *Telnet access only.*

Telnet address: iii.lib.duke.edu or 152.3.190.146

Login name = med (No password required)

Telnet via the Web: <http://www.lib.duke.edu/databases>

Continued on next page

- **Ovid Databases** - Access to MEDLINE, BioethicsLine, CancerLit, Core Biomedical Collection, Current Contents Search, HealthSTAR, International Pharmaceutical Abstracts (IPA), Nursing & Allied Health (CINAHL), and PsycINFO.

Ovid Web Gateway - Access via the Website at <http://www.mc.duke.edu/mclibrary/databases.html>. An individual account is NOT required for **Generic Access**, but users must connect from a Duke IP address and will not be able to permanently save search strategies. **Personal Accounts** are available for Duke faculty and DUMC staff and students ONLY. Contact 660-1100 for registration information and help with passwords. Note: Passwords may ONLY be created or changed via the Telnet version. *Telnet address:* dumclib or dumclib.mc.duke.edu or 152.3.64.222 (Individual account required)

Modem: 681-8281; Full Duplex; No Parity; Databits 8; Stopbits 1.

Network Control HELP Desk: 684-2243

- **Other Databases**

Grants: SPIN and IRIS

Consumer Health: Health Reference Center

Access these databases via terminals in the Library or via the Website at <http://www.mc.duke.edu/mclibrary/databases.html>.

Fellowship and Residency: FREIDA. Access is only available via the Website at <http://www.mc.duke.edu/mclibrary/databases.html>.

Classes 660-1111

- The Library offers a variety of classes including the Ovid databases, SPIN, Basics of Library Use, Internet, and HTML (HyperText Markup Language)
- Call for more information or see the Web page at <http://www.mc.duke.edu/mclibrary/ed/schedule.html>.

Computer/Equipment Resources

- **Medical Library Education Center (MLEC)**
16 Power Macs with DOS boards, Internet and database access, multimedia and microcomputer software/workstations. To schedule the Classroom, call 660-1190 or use the Web form at <http://www.mc.duke.edu/mclibrary/lrs/lrsform.html>.
- **Reserve Reading Room** - Networked PCs and Macs, application software, Internet and database access.
- **Online Catalog Terminals** - Reference Area, Stacks Levels, Current Serials Area.
- **Audiovisual Equipment/Viewing Areas** - Reserve Reading Room, Rooms 316 and 418.

Special Collections

- History of Medicine
- Reference
- Reserve Reading Room
- Engel (leisure reading)

NEW BORROWING POLICIES

(EFFECTIVE SEPTEMBER 1, 1997)

The Medical Center Library has been reviewing several of its borrowing policies and plans to implement the changes listed below in September. DUMC Library users have been suggesting longer loan periods due to their busy schedules, off-campus locations, and student rotations to other areas of the state. The Medical Center Library is also working with the Triangle Research Library Network (TRLN) on a document delivery system which would provide easier and faster access to materials located at UNC, NCCU, NCSU, and Duke. The other TRLN libraries already have longer and more uniform borrowing privileges. To help our Duke library users and to facilitate borrowing among the TRLN campuses, we are going to implement these new policies.

Book Loan Periods*

The new loan period will be **4 weeks** (28 days) with one renewal (4 additional weeks) for *both* Duke and TRLN borrowers.

Duke library users may place holds on materials which are checked out.

The Library may recall any book after two weeks, if it is needed by another patron. In special situations, such as emergencies or requests for reserve materials, the Library may recall a book earlier.

** The change in the book loan period will be started on a trial basis and will be reviewed at the end of three and six months, to make sure this still provides adequate and timely access to our book collection.*

TRLN Borrowers

Undergraduate and graduate students, faculty, and staff may borrow materials. There is a limit of six (6) books per library user.

Only our changes in policy are listed above. All other policies regarding journals, audiovisuals, and overdues will remain the same. Books in the History of Medicine's circulating collection will still be loaned for two weeks.

Has Your Name or Address Changed?

Name and address changes for our newsletter may be sent to **DUMC Box 3702**, our email address at mcnews@mc.duke.edu, or you may complete the Mailing List Web Form at <http://www.mc.duke.edu/mclibrary/forms/mailist.html>. Our online mailbox will be checked daily, Monday-Friday.

ACCESSING THE OVID DATABASES

One of the most valuable research tools at the Medical Center Library is the Ovid Database System. Through this system, patrons may do networked online searching (self-service or assisted) of MEDLINE, BioethicsLine, CancerLit, Core Biomedical Collection, Current Contents Search, HealthSTAR, International Pharmaceutical Abstracts (IPA), Nursing & Allied Health (CINAHL), and PsycINFO. Patrons can access these databases remotely in two ways - through the "classic" **Ovid Telnet** connection (direct or via modem) and through the **Ovid Web Gateway**, using Netscape or other Web browsers. (See page 4 under "Ovid Databases" for access parameters.)

Due to licensing requirements, accessing the Ovid databases had been restricted primarily to Medical Center personnel and Duke faculty. However, the Medical Center Library and the Perkins Library System recently negotiated a campus-wide license for Ovid, giving access to anyone on campus. (Public access is still available only from within the Medical Center Library.) The new licensing agreement also increased the number of simultaneous users. In the past, only 40 users could be logged on at the same time for *all* the databases. With the new agreement, 40 users could be using MEDLINE, while another 40 could be signed onto Current Contents Search.

One of the biggest changes the new license brings is that patrons may now access the Ovid Web Gateway without having an authorized ID and password, which has always been required in the past. Although an individual account is NOT required for **Generic Access**, users must connect from computers on the Duke campus with Duke IP (Internet Protocol) addresses, or use a SLIP (Serial Line Internet Protocol) or PPP (Point-to-Point Protocol) modem connection through a Duke acpub account. Although this means one less password to remember, using this access method will not allow you to permanently save search strategies or use the new SDI (Selective Dissemination of Information) service highlighted on page 7. These Ovid features are only accessible to patrons with personal accounts.

Personal Accounts are available for Duke faculty and DUMC staff and students ONLY. This authorized ID (also called a "username" or "login name") and password will allow patrons to use either the Ovid Web Gateway or the Telnet connection, store search strategies, and permanently change system defaults in Ovid, such as changing the Email default to your own Internet address. For registration information and help with passwords, contact Circulation Services at 660-1100. Other DUMC systems, such as DHIS (Duke Hospital Information Service), are completely separate from the Library and have their own access procedures.

Creating Your Password

When you **login for the first time to the Telnet version of Ovid**, you will be asked to enter your username and will

then be prompted to create a password. Note: Passwords may ONLY be created or changed via the Telnet version. If you try to create your password via the Ovid Web Gateway, it will fail and you will see a message that the Ovid Web Gateway is unavailable.

Do not confuse your username (which is a combination of up to the first five letters of your last name with a series of numbers, totaling eight characters) with your password. The structure of your password is very important - **it must be 6 to 8 characters long, begin with a letter, and contain at least two letters and one number or special character** (example: *arturo45* or *jpgetty\$*). In order to avoid later confusion, it is recommended that you use all lowercase letters when creating your password, since it is "case sensitive." The password must differ from your username (sign-on ID) and from any reverse or circular shift of that username. **A word of caution:** Upon receiving your username authorization, you should login immediately and create your password to protect your account. If you do not create a password within a month, your account will be locked and you must contact Circulation Services to regain access.

One of the most frequent problems patrons seem to have is the "forgotten" password, and because *it is a personal password*, the Library staff have no way to "look it up." However, the Library has tried to make this process more convenient by allowing you to change your password at any time from the dumclib menu. If you do forget your password, you must contact Circulation Services to regain access.

Maurice Reece
Circulation Services

DATABASE UPDATE

The Medical Center Library is pleased to announce the addition of two outstanding databases to the selection available through our Ovid search system: International Pharmaceutical Abstracts (IPA) and BioethicsLine. **International Pharmaceutical Abstracts**, produced by the American Society of Health-System Pharmacists, provides international coverage focusing on drug therapy, toxicity, pharmacy practice, and biopharmaceutics, as well as legislation, regulation, technology, utilization, information processing, education, economics, and ethics as related to pharmaceutical science and practice. **BioethicsLine**, produced jointly by the Kennedy Institute of Ethics at Georgetown University and the U.S. National Library of Medicine, contains references to English-language materials on bioethics from the disciplines of medicine, nursing, biology, philosophy, religion, law, and the behavioral sciences, as well as some selections from the popular literature.

Continued on next page

Database Update...continued

In addition to new databases, users now also have access to broader subject coverage within the **Current Contents Search (CC Search)** database. Though the Library has made available the combined science subsets of CC Search (clinical medicine; life sciences; agriculture, biology, and environmental sciences; physical, chemical, and earth sciences; engineering, computing, and technology) for some time, we are now offering access to the full database, which includes subsets covering the social sciences and arts and humanities. Users now have access, in one database, to recent references from more than 7500 international journals covering a broad variety of disciplines. Weekly updates from the last 12-18 months are maintained at a given time. Access to the full database has been made possible through a joint subscription arrangement between the Medical Center Library and the Duke University Libraries system.

CC Search, IPA, and BioethicsLine can all be searched using the original **Ovid Telnet** interface or the newer **Ovid Web Gateway** on the Library's Website (<http://www.mc.duke.edu/mclibrary/databases.html>).

Another database enhancement is expanded access to **Health Reference Center**, a database designed primarily for consumers and nursing and allied health students. In addition to being available within the Library at terminals near the Information Desk, Health Reference Center can now also be searched via the Web from computers with a Duke IP address. It is accessible from links on the Medical Center Library's Website (<http://www.mc.duke.edu/mclibrary/databases.html>) and from the Duke University Libraries' Electronic Resources page (<http://www.lib.duke.edu/databases>).

Anne Powers
Information and Education Services

MAJOR OVERHAUL IN OVID CLASSES

After carefully monitoring our Ovid training classes and reviewing the class evaluations, we found that having all the classes on the same day, at the same time, did not offer enough flexibility. We also found that the classes were often an odd mixture of staff and faculty with very different levels of database familiarity and very different uses of the databases. Class participants often included beginner and experienced searchers in the same class, as well as support staff who needed to verify citations and faculty needing to use the databases as a research tool.

Starting in September, we will be replacing the "one size fits all" Ovid training class with 3 customized programs:

Basics of Ovid: Telnet will be a one-hour class on the fundamentals of searching the MEDLINE databases using

Ovid via Telnet. Participants will learn to identify an appropriate database, formulate a basic search strategy, identify the proper function keys to execute the search, limit the retrieval to specific criteria, and print the results. **Participants are not expected to have used Ovid or have their own user ID.** This class will be offered the first Tuesday of the month from 11:00 am - 12:00 noon.

October 7 and November 4

11:00 am - 12:00 noon

Basics of Ovid: Web Gateway will be a one-hour class on the fundamentals of searching the MEDLINE databases using the *Ovid Web Gateway*. Participants will learn to identify an appropriate database, formulate a basic search strategy, identify the proper function keys to execute the search, limit the retrieval to specific criteria, and print the results. **Participants are expected to be familiar with the Internet and Netscape. Participants are not expected to have used Ovid or have their own user ID.** This class will be offered the second Wednesday of the month from 3:00 pm - 4:00 pm.

October 8 and November 12

3:00 pm - 4:00 pm

Ovid Advanced Search Techniques will be a one-hour class in advanced search techniques. Participants will learn more about developing sophisticated search strategies, using *MeSH* terms, grouping subheadings, textword searching, creating and storing strategies, and downloading results to email or disk. The focus of the class will be on developing strategies that can be used either via Telnet or the Ovid Web Gateway. **Participants are expected to have experience using Ovid.** This class will be offered twice a month, on the third Tuesday and fourth Thursday of the month.

October 21 and November 18

11:00 am - 12:00 noon

September 25, October 23, November 20

3:00 pm - 4:00 pm

To register for any of these classes, contact Connie Schardt, DUMCL Education Coordinator at 660-1124 or send email to schar005@mc.duke.edu.

We hope that there is a class for you in this new schedule. As always, if you have special needs or problems with searching the Ovid system, you may call the Library's Information & Education Services Department at 660-1111 to arrange for a consultation with one of our experienced searchers.

SDI SERVICES

The Library now offers 2 different SDI services. But what exactly is an SDI, you might ask? SDI stands for Selective Dissemination of Information, meaning that you can be notified of new articles that are published in your specific field of interest, soon after the citations become available.

We have been offering mediated SDIs for several years. Under the mediated SDI service, you consult with a librarian about what topics you are interested in, and a profile is setup on your behalf. Every month, we mail you a printout of the current research and charge your account. The advantages of this service are that we design your search, it can handle large numbers of citations, and it provides the most current form of MEDLINE available.

In August, the Library introduced a new, free SDI service through our Ovid search system. With this service, you design and save your own SDI search strategy, and the results are emailed directly to you. Your search is run against the database the night after we update our system, so you will be notified promptly of current research. This service can be used with any database on our Ovid system including MEDLINE, Current Contents Search, and PsycINFO. Currently, these SDIs can only be delivered by email, and there is a 300 citation maximum. To use this service, you must have a personal Ovid account from the Library. More information about saving your SDI strategy can be found below.

To create an SDI on the Ovid Web Gateway

- ◆ Open the database where you want to run an SDI.
- ◆ Create a complete search strategy.
(Only the last set will be emailed to you.)
- ◆ Click on the "Save Search History" button.
- ◆ Click on the "as an SDI service" button.
Enter a filename under General Parameters.
(Do not use spaces or slashes in the name.)
- ◆ Enter your complete email address under recipient.
- ◆ Select SDI Output format.
"Citation+abstract" and "Ovid" format are the defaults.
Select Reprint/Medlars format if you plan to import the documents into a reprint manager, such as Reference Manager, ProCite, or EndNote.
- ◆ Click on "Save Search" button.

To create an SDI on the Telnet Version

- ◆ Open the database where you want to run an SDI.
- ◆ Create a complete search strategy.
(Only the last set will be emailed to you.)
- ◆ Invoke the Save option. [CTRL+B]
- ◆ Select "Save SDI" from the displayed list.
(Use the down arrow to move down the list, then press <Enter> when "Save SDI" is highlighted.)

- ◆ "Save SDI" dialog screen displays two basic options:
Save Name: Enter a name for your SDI.
(Do not use spaces or slashes in name.)
Comments: Enter an (optional) description of your SDI.
Press <Enter> or CTRL+O.
Note: We only allow email SDIs.
- ◆ Select fields to be sent, press <Enter> or CTRL+O.
- ◆ Select output format for citations, press <Enter> or CTRL+O.
"Ovid" is the default format. Select "Reprint Format" if you plan to import the saved SDI documents into a reprint manager, such as Reference Manager, ProCite, or EndNote.
- ◆ Enter your complete email address, then press <Enter> or CTRL+O.

You now have an SDI that can be run against a newly updated database for its most recent entries. The Library will run the SDIs whenever a database is updated, so all you need to do is wait for the results to show up in your email.

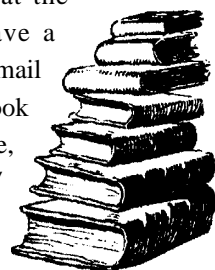
NOTE: We have placed a 300 citation maximum on all SDIs. If your search consistently retrieves more than 300 citations, you should consider talking to an Information Services Librarian about our fee-based SDI service.

For information about both SDI services, please call Information and Education Services at 660-1111 or send email to mclref@mc.duke.edu.

Eric Albright
Head, Information and Education Services

WOULD YOU LIKE TO RECOMMEND A BOOK FOR THE LIBRARY?

Book request cards are available at the Information Desk. You may leave a request card at the Information Desk, mail it to Box 3702 DUMC, or use the Book Request form via the Library's Website, <http://www.mc.duke.edu/mclibrary/collections.html>. The Book Request form is under the *New Book List*.



Please supply as much information as possible. Your request will be reviewed and you will be notified whether or not the item can be purchased.

If you have questions or would like to discuss any particular items or subject areas, please contact the Collection Development Librarian, Mary Ann Brown, at 660-1122 or send email to brown050@mc.duke.edu.

Net.work

If you're new to DUMC or have returned from summer adventures, you've probably already discovered that DUMC and Duke have a lot to offer via the World Wide Web. The DUMC Website (<http://www.mc.duke.edu>) underwent a major renovation in June and features newly reorganized, easy-to-find information for faculty, staff, and students, as well as patients and visitors.

One tool very familiar to Duke health care professionals is the *Physician Referral Directory* (PRD), which is now available via the Web. Physicians can use this tool to locate and request appointments with Duke specialists. For faculty and researchers, there's the *Faculty Research Directory*, the *Faculty Handbook*, and a searchable directory of annual *Notices of Awards and Scholarships*. Students can find many resources to facilitate their projects, including the Division of Educational Media Services and the Medical Center Library.

Through the Library's Website (<http://www.mc.duke.edu/mclibrary>), Duke users can access several databases including MEDLINE, CINAHL, the Core Biomedical Collection (full text of 15 major journals), and the Health Reference Center (medical, nursing, allied health, and consumer health information). DUMCL's own Historical Images in Medicine collection offers a searchable Web-based exhibit of more than 3,000 rare images of people, instruments, and other artifacts. DUMC faculty, staff, and students are welcome to read about and register for the Library's Internet classes, ask reference questions, and request interlibrary loan items and mediated searches. You can also get copies of Library information guides, as well as read this newsletter online.

The Duke University Libraries' Website (<http://www.lib.duke.edu>) also has a fresh look. It features links to over 100 electronic journals in the arts, humanities, and the social and physical sciences. Also included are tons of searchable abstracting and indexing databases in many subject areas (including the health and life sciences). The Special Collections Library offers world-renowned digital historical collections, including the Duke Papyrus Archive.

How do you get access to all the great Web resources that Duke has to offer? If you have a computer connected to the Common Services Network or DukeNet, and a Web browser, start exploring at <http://www.duke.edu>. If you lack a connected computer or browser, contact your Local Area Network (LAN) Administrator. If you don't know who your LAN Administrator is, ask your department's business manager. Everyone is welcome to access the Web at the DUMCL Electronic Classroom, located in the Medical Library Education Center on the Library's Lower Level. The Library also has workstations in the Reserve Room on the Entrance Level, should the Classroom be in use.

If you would like to access the Internet from home, free access is available using a Duke acpub account. For information on how to get an acpub account, call the **OIT Help Desk** at **684-2200**, or take three blank formatted 3.5" diskettes to 130A North Building on Research Drive and register for an account. For more information on Duke OIT's acpub documentation and other services, consult their Website at <http://www.oit.duke.edu>.

Scott Garrison, DUMC Webmaster
DUMCL Systems Librarian

INTERNET INSIGHTS Coming In October - An Internet Clinic!!!

The response to our Internet workshops has been very good. A frequent comment made in class and on the evaluations is that folks really like having time to use the Internet while experienced Library staff are available to help with questions and problems. In trying to diversify the learning environment, the Internet Training Team came up with the idea of an Internet Clinic.

The Internet Clinic will be held twice a month. During "clinic" hours, the MLEC (Room 104) will be open to faculty, staff, and students who want to learn more about the Internet without sitting through a formal class. People can come with specific questions or topics and get advice and help from the Internet Training Team and Information & Education Services librarians. The clinic will also be open to faculty, staff, and students who just want to use the Internet while having staff readily available to help, in case one becomes lost in cyberspace.

Clinic hours

October 10th - 10:00 am to 12:00 noon
October 24th - 2:00 pm to 4:00 pm
November 7th - 2:00 pm to 4:00 pm
November 21st - 10:00 am to 12:00 noon

Come on over. No reservations are required. For more information, contact 660-1124.

Connie Schardt, Education Coordinator
Information and Education Services



FULL TEXT JOURNALS: EXPANDING YOUR OPTIONS

In January 1997, the Library introduced the newest interface to the Ovid databases by offering access via Netscape and other Web browsers. Accompanying this Web interface was the introduction of a new full text database - the Ovid Core Biomedical Collection I (CBC). For the first time, access to the full text and graphics of several leading medical journals published over the past 2 to 3 years was available. Now, patrons may find citations in the MEDLINE database that have links to the full text of those journals in the CBC and can easily call up the article on their office or home computer and print the entire article.

The Core Biomedical Collection I includes the following full text journals: *American Journal of Medicine*; *American Journal of Obstetrics & Gynecology*; *American Journal of Surgery*; *Annals of Internal Medicine*; *Archives of General Psychiatry*; *British Medical Journal*; *Canadian Medical Association Journal*; *Circulation*; *Journal of the American Medical Association*; *Journal of Bone and Joint Surgery (American volume)*; *Journal of Clinical Investigation*; *Lancet*; *New England Journal of Medicine*; *Pediatrics*; and *Science*.

Patrons can access the CBC by logging onto the Medical Center Library's Website (<http://www.mc.duke.edu/mclibrary/databases.html>) and choosing one of the options under the **Ovid Web Gateway**. With Ovid Web Gateway access, you can see and print the full graphics and text. For patrons who prefer a Telnet connection, that option is still available by a direct connection or by using the **Ovid Telnet** link on the Web page. When using this option via the Web, the browser must be configured to run a Telnet program, and the patron must have an authorized user account. Also, the Telnet version will only offer access to the text, not the graphics.

In addition to the full text journals in the CBC, the Library has subscribed to the Web versions of three other basic science journals: *Journal of Biological Chemistry* (<http://www.jbc.org>); *Biochemistry* (<http://acsinfo.acs.org/journals/bichaw/license.html>); and *Nucleic Acids Research* (<http://www.oup.co.uk/nar>) for which you must preregister to get a username and password. All three have the full text of the issues from 1995 to date and are included in the list of locally available electronic journals on the Duke University Libraries' Web page at <http://www.lib.duke.edu/ejournal/alpha.htm>.

These subscriptions are based on Duke University's Internet Protocol (IP) address and are available campus-wide, or from off-campus through acpub accounts. (You can open an acpub account by contacting OIT, the Office of Information Technology, at 684-2200.)

With the advent of full text electronic access to these journal titles, Library patrons now have the option of not having to come to the Library to photocopy an article but may obtain printouts through their office or home computers.

The Lynx 5000 Network Printer Manager was introduced at the Medical Center Library this past summer as a way to reduce paper use and control increasing costs. As a result, Library users must now pay to print all documents when using the computer workstations in the Library Reserve Room or in the Medical Library Education Center (MLEC), including Ovid searches, word processing documents, or printouts of journal articles. The cost is \$.06 per page via the same cards that are used in the Library photocopiers. Printing of Ovid and other database citations remains *free* at the search stations in the Library Reference Area.

Reminder: The Medical Center Library also has print copies of all of these electronic journals, if a patron prefers that format or needs better resolution of the many illustrations.

Maurice Reece
Circulation Services

LIBRARY PHONE NUMBERS

A-to-Z Information Express	660-1135
Acquisitions	660-1115
Administration	660-1150
Cataloging	660-1120
Circulation	660-1100
Collection Development/Gifts	660-1122
Electronic Classroom (MLEC)	660-1190
History of Medicine	660-1144
Information & Education Services	660-1111
Interlibrary Loan	660-1135
Journals	660-1110
Learning Resources	660-1160
Marketing and Publications	660-1127
Systems	660-1195

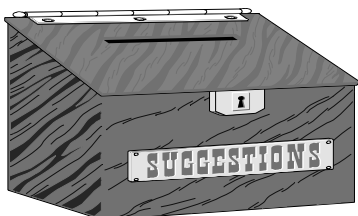
Need to Ask a Reference Question?

Contact Information and Education Services at **660-1111**, send email to mclref@mc.duke.edu, or complete the Web form at <http://www.mc.duke.edu/mclibrary/ref/forms/refform.html>.

Please Update Your Rolodex Today!

It has been over a year now since our phone numbers were changed, but patrons are continuing to call our old numbers! Our current numbers are listed on page 9, but for those of you who would like updated rolodex cards, they will soon be available at the Library.

The Medical Center Library staff welcomes your suggestions and comments. Please feel free to drop them in the Suggestion Box located on the Entrance Level across from the Circulation Desk.



The Administration Office still has quite a few **unclaimed copy cards**. If you have lost your card, please call 660-1150 or stop by Room 103 on the Lower Level.

AMA FREIDA HAS MOVED

One of our most popular reference tools is the *Graduate Medical Education Directory* (also known as the "Green Book"), and its electronic edition, FREIDA. In the past, we have made the CD-ROM version of FREIDA available in the Reference Area, but now the new, updated version is only accessible on the Web at <http://www.ama-assn.org/med-sci>.

This site is available via any computer with Web access. In the Library, it is accessible in the Reserve Room (Entrance Level) or the MLEC Electronic Classroom (Room 104).

Please note that while the Website is open to anyone for browsing and printing program information, label printing can only be done by AMA members and student members.

If you have any questions about how to use this site, please call the Information Desk at 660-1111 or email us at mc1ref@mc.duke.edu. The *Graduate Medical Education Directory* is still shelved at the Information Desk.

Eric Albright
Head, Information and Education Services

LIBRARY HOURS

With the beginning of the fall term, the Medical Center Library has resumed the following regular hours:

Monday - Friday	8:00 am - 12:00 midnight
Saturday	10:00 am - 6:00 pm
Sunday	12:00 noon - 12:00 midnight

Patrons are reminded to call **660-1100** for book renewals, anytime during Library hours, up until 15 minutes before closing.

Information and Education Services has also resumed regular hours effective September 3, 1997:

Monday - Thurs.	8:00 am - 8:00 pm
Friday	8:00 am - 5:00 pm
Sunday	1:00 pm - 5:00 pm

SCHEDULE THE MLEC CLASSROOM VIA THE WEB

The Medical Library Education Center (MLEC) Classroom is available to Duke faculty, staff, and DUMC students for educational and training programs utilizing computer technology and/or hands-on training. You may reserve the classroom by completing the MLEC Classroom Reservation Form available on the Web (<http://www.mc.duke.edu/mclibrary/lrs/lrsform.html>). Learning Resources Services staff will confirm your reservation within 24 hours of receipt, Monday-Friday.

Are you receiving duplicate copies of this newsletter?

If so, please let us know by sending an email message to mc1news@mc.duke.edu or drop a note to the Medical Center Library, DUMC Box 3702.

Visit

the

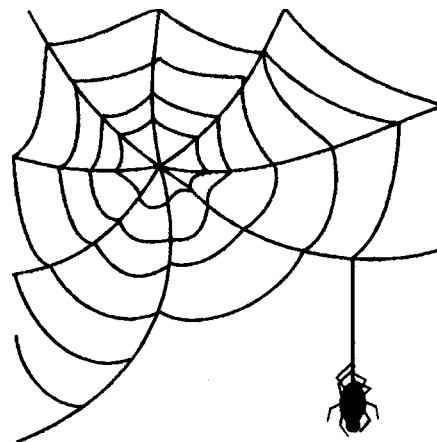
Medical

Center

Library

on the

Internet at:



<http://www.mc.duke.edu/mclibrary>

SURVEYS: NEW AND OLD

Included in this issue is a questionnaire that we would like you to complete to let us know how well we are doing in meeting your information needs. Your responses to our questions will help us improve old services and create new ones. So please help us out by completing the simple survey (on pages 13 - 14) and returning it to us as soon as possible.

Many of you also completed an Ovid survey last year. This questionnaire was designed to let us know how well the Ovid database system (*dumclib*) was working and what problems might be occurring. This is what we learned from our registered Ovid users:

- ▣ 91% currently use the system. The other 9% needed better instructions, more time, or more information on how to get started.
- ▣ 42% use the system through a Telnet connection
22% come to the Library
- ▣ 59% are PC users; 39% use Macs
70% search at work; 28% search at home
- ▣ 88% satisfaction with our system
(34% very satisfied; 54% satisfied)
Only 2% were dissatisfied
- ▣ Most of you (77%) have not attended classes
(*See the article on page 6 regarding our new classes*)
- ▣ The overall ratings for the system features were good
7% thought printing and downloading could be better
- ▣ 96% rated MEDLINE as important
(91% very important; 5% important)
53% rated Current Contents Search as very important or important
- ▣ Most problems were rated as occurring occasionally
11% had problems finding terms; 12% got too many citations; 7% got too few.
(*Check out our classes on page 6 - they will help fine tune your searching skills*)

Overall, people seemed pleased with the performance and features of our database system. We are currently revising our handouts and online instruction sheets and offering new classes.

Thanks to your comments, we will be able to work on the problem areas and make sure you have fast and reliable access to these key resources.

To get more detailed information on the Ovid Survey Results, follow the link from our Web page at <http://mc.duke.edu/mclibrary/databases.html>

HISTORY OF MEDICINE GENERAL INFORMATION

The History of Medicine Collections, which is located in Room 102 on the lower level of the Library, is essentially a library within a library. For the convenience of the student and researcher, primary materials as well as reference works, circulating titles, and current issues of relevant journals are gathered in one location. The collection consists of 20,000 volumes and 4,000 manuscripts, as well as photographs, illustrations, medical instruments, stamps, medals, and a variety of medical realia. The Historical Images in Medicine (HIM) database is also accessible through our Website at <http://www.mc.duke.edu/mclibrary/hmc/him.html>. The **Trent Room**, which is located off the reading room, contains a selection of Dr. Josiah Charles Trent's rare medical books, as well as his collection of ivory anatomical manikins. On the terrace outside the reading room is a medicinal herb garden containing over fifty different herbs.

Upon first visit, a patron will be asked to fill in a reader registration card which is kept on file. Other special practices are followed due to the rare and fragile nature of many of the materials, such as pencils only in the reading room, foam cradles to support books while they are being consulted, and velvet-covered weights, known as snakes, to hold pages open. Since so much of the collection cannot be checked out, the staff attempts to accommodate requests for photoduplication whenever the condition of the material permits.

Everyone is welcome to visit us. We will be glad to arrange individual or group tours or have classes meet in our reading room in order to see rare materials that are related to their study. Copies of our *History of Medicine Bibliography*, as well as other handouts about the collection, are provided to anyone that might be interested. We have speakers at intervals during the semester and issue a newsletter twice a year. Our hours are 8:00 am - 5:00 pm, Monday through Friday, and evening hours as announced.

You are cordially invited to join the **Trent Associates** and receive the "Trent Associates Report" which is issued biannually. You will also be placed on the mailing list for events held during the year. For further information, contact **Suzanne Porter**, Curator, at **660-1143** or send email to porte004@mc.duke.edu.

SPOTLIGHTED SOFTWARE

In addition to our extensive book and journal collections, there are a variety of audiovisual and multimedia resources available for use. Our collections include CD-ROM programs, computer-assisted instruction programs, videodiscs, videocassettes, slides, and audiocassettes on a variety of topics. Audiovisual programs may be checked out for up to one week. Items may also be put on reserve and/or held for specific group viewing. Multimedia programs may be used in the Multimedia Area of the Medical Library Education Center (MLEC). Below is a small sample of the materials we have available to enhance your learning.

AUDIOVISUALS

Mayo Internal Medicine Board Review - Consists of 30 videocassettes designed to help candidates in their preparations for the certification and recertification examinations in internal medicine, administered by the American Board of Internal Medicine (ABIM). While especially directed to candidates preparing for board examinations, this series also provides an overview of all areas in internal medicine for practicing physicians.

Human Anatomy Videotape Series - The title of this videocassette series is "*The Study of Human Anatomy: A Regional Approach*." Each of the 28 videos in this series is an in-depth analysis of a particular region of the body.

The Bonnie Tapes - This videocassette series deals with the impact of mental illness on a patient and her family members.

Bedside Emergencies - Series of 30 videocassettes discussing immediate assessment and treatment of choking, hemorrhaging, and anaphylactic shock.

MULTIMEDIA

Dynamic Human - This interactive CD-ROM illustrates the complex relationships between anatomical structures and their functions in the human body. Realistic, three-dimensional visuals are the premier feature of this exciting learning tool.

Interactive Atlas of Human Anatomy - This CD-ROM atlas contains all the brilliant Netter anatomy illustrations in the highly acclaimed book. The detailed pictures provide a versatile new tool for learning and teaching human anatomy.

CASAC - Computer-Assisted Substance Abuse Curriculum motivates and enables users to diagnose and initiate treatment for alcohol and other drug problems, particularly problems in their early stages.

Procedural Skills in Internal Medicine - Computer-based way to study techniques for central venous line placement, thoracentesis, joint aspiration, and four other key clinical skills. Each procedure comes alive with video clips, case studies, and text-based instruction.

Basic Ophthalmology - Interactive CD-ROM providing text and images of the eye's anatomy, vision, and ocular disorders, including diagnoses and therapy.

For a full listing of our multimedia programs, check out our multimedia bibliography on the Web (<http://www.mc.duke.edu/mclibrary/lrs/mmbiblio.html>). To help you determine what materials are available in your area(s) of interest, subject-specific audiovisual bibliographies are located on the Medical Center Library's First Stack Level.

Learning Resources Services staff are constantly working towards improving the audiovisual and multimedia collections and services. For questions and information, please contact Alveria Pugh (660-1160; beeper 970-2783; pugh0001@mc.duke.edu) or Julie VanDyke (660-1157; vandy005@mc.duke.edu).

NEWSLETTER VIA THE WEB

Our *Newsletter* may be accessed via our Website at

<http://www.mc.duke.edu/mclibrary/news/newsletter.html>

STAFF NEWS

Artura Goods and **Louis Wiethe**, Circulation Services, attended a special training session for generating reports from the DRA Online Catalog. The software program, UDMS Report Writer, allows the Library to generate statistics and customized lists of materials from the information in DRA. Artura and Louis will be the Library's primary programmers for this software program.

Connie Schardt, Education Coordinator, has been appointed to head the Search Committee for the Editor of MLANET, the Medical Library Association's Website. Connie is also one of the compilers of "*Accreditation and the Hospital Library: Information Management Plans and Assessment Tools*," a new MLA DocKit. At the Annual Meeting of the Southern Chapter of MLA, Connie will be speaking on JCAHO and Information Management issues.

Iris Gale
Administration





LIBRARY EDUCATIONAL OFFERINGS

The following classes will be held in the Medical Library Education Center (MLEC), Room 104 on the Lower Level of the Library.



DATABASE CLASSES

OID MEDLINE SYSTEM

Ovid Basics: Telnet

Participants are not expected to have used Ovid

11:00 am - 12:00 noon

Tuesday - October 7; November 4

Ovid Basics: Web Gateway

Participants are not expected to have used Ovid but should be familiar with the Internet and Netscape

3:00 pm - 4:00 pm

Wednesday - October 8; November 12

Ovid Advanced Search Techniques

Participants are expected to have experience using Ovid

11:00 am - 12:00 noon

Tuesday - October 21; November 18

3:00 pm - 4:00 pm

Thursday - September 25; October 23; November 20

BASICS OF LIBRARY USE

1:00 pm - 2:30 pm

Tuesday, October 7, 1997

Tuesday, November 4, 1997

Tuesday, December 2, 1997

Classes include the use of the DRA online catalog to determine book and journal holdings, followed by a brief discussion of Library services and a tour of the Library.

SPIN (SPONSORED PROGRAMS INFORMATION NETWORK)

Grants Database via the Web

10:00 am - 11:00 am

Thursday, October 9, 1997

INTERNET ACCESS AND PUBLISHING CLASSES

Hands-on time will be included. Registration is required and space is limited. Sign-ups will be accepted by phone at 660-1124, via email sent to Connie Schardt at schar005@mc.duke.edu, or via the Web at <http://www.mc.duke.edu/mclibrary/classes/reg.html>.

HTML Basics

9:00 am - 12:00 pm

Thursday, November 11, 1997

HTML Advanced

9:00 am - 12:00 pm

Thursday, September 25, 1997

Wednesday, November 19, 1997

Introduction to the World Wide Web Using Netscape

10:00 am - 12:00 pm

Wednesday, October 8, 1997

Thursday, November 13, 1997

Searching and Evaluating Information on the World Wide Web

10:00 am - 12:00 pm

Tuesday, September 23, 1997

Wednesday, October 22, 1997

10:00 am - 12:30 pm

Tuesday, November 25, 1997



Registration is not required for the Database Classes



For the most current class schedule, connect to the Library's Website at <http://www.mc.duke.edu/mclibrary/ed/schedule.html>.

*The Duke University Medical Center Library Newsletter is published quarterly.
Susan Feinglos, Director Beverly Murphy, Editor*

Editorial Board:

Mary Ann Brown

Maurice Reece

Iris Gale

Pat Thibodeau

Julie VanDyke

To subscribe to the Library Newsletter, please complete the information below and return this sheet to the Medical Center Library, Box 3702, DUMC. You may also send email to mclnews@mc.duke.edu, or complete the Mailing List Form at <http://www.mc.duke.edu/mclibrary/forms/maillist.html>.

NAME _____

DEPARTMENT _____

BOX NUMBER _____

DUKE UNIVERSITY MEDICAL CENTER
BOX 3702 MEDICAL CENTER LIBRARY
DURHAM, NORTH CAROLINA 27710

First Class